

RPA939Hu01 100µg

Recombinant Gamma-synuclein (SNCG)

Organism Species: *Homo sapiens (Human)*

Instruction manual

FOR RESEARCH USE ONLY

NOT FOR USE IN CLINICAL DIAGNOSTIC PROCEDURES

12th Edition (Revised in Aug, 2016)

[**PROPERTIES**]

Source: Prokaryotic expression

Host: *E.coli*

Residues: Met1~Glu121

Tags: N-terminal His and GST Tag

Subcellular Location: Cytoplasm

Purity: > 90%

Traits: Freeze-dried powder

Buffer formulation: 20mM Tris, 150mM NaCl, pH8.0, containing 0.01% SKL, 5% Trehalose and Proclin300.

Original Concentration: 200µg/mL

Applications: Positive Control; Immunogen; SDS-PAGE; WB.

(May be suitable for use in other assays to be determined by the end user.)

Predicted isoelectric point: 5.9

Predicted Molecular Mass: 42.8kDa

Accurate Molecular Mass: 45kDa as determined by SDS-PAGE reducing conditions.

[**USAGE**]

Reconstitute in 20mM Tris, 150mM NaCl (pH8.0) to a concentration of 0.1-1.0 mg/mL. Do not vortex.

[**STORAGE AND STABILITY**]

Storage: Avoid repeated freeze/thaw cycles.

Store at 2-8°C for one month.

Aliquot and store at -80°C for 12 months.

Stability Test: The thermal stability is described by the loss rate. The loss rate was determined by accelerated thermal degradation test, that is, incubate the protein at 37°C for 48h, and no obvious degradation and precipitation were observed. The loss rate is less than 5% within the expiration date under appropriate storage condition.

[SEQUENCE]

MDVFKKGF SI AKEGVVGAVE KTKQGVTEAA EKTKEGVMYV GAKTKENVVQ
 SVTSVAEKT KEQANAVSEAV VSSVNTVATK TVEEAENIAV TSGVVRKEDL
 RPSAPQQEGE ASKEKEEVAE E

[IDENTIFICATION]

ATGGATGCTTCAGAGGGCTTCTCCATCGCCAGGAGGGGCTGGTGGTGCCTGGTGGAAAGCCAGCAGGGGGTGCAGGAGCAGCTGGAGAGCCAGGAGGGGGTATGTTATGTGGAGCCAGCCAGGAGATGTTGTCCAGGCTGACCTCAGTGGCCGAGAGCCAGGAGCCAGCCAGCCGCTGACGAGCTGTGGTGGCAGCTCAGCT
 M D V F K K G F S I A K E G V V G A V E K T K Q G V T E A A E K T K E G V M Y V G A K T K E N V V Q S V T S V A E K T K E Q A N A V S E A V V S S V N T

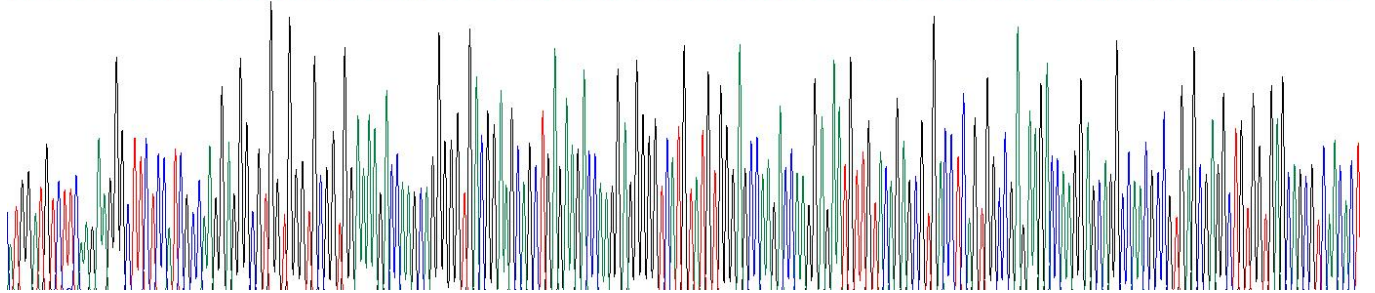
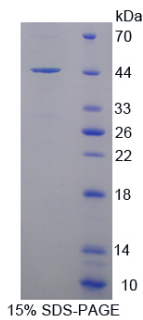


Figure. Gene Sequencing (Extract)



[IMPORTANT NOTE]

The kit is designed for research use only, we will not be responsible for any issue if the kit was used in clinical diagnostic or any other procedures.