

RPC343Hu02 50µg

Recombinant Heat Shock 70kDa Protein 5 (HSPA5)

Organism Species: *Homo sapiens (Human)*

Instruction manual

FOR RESEARCH USE ONLY

NOT FOR USE IN CLINICAL DIAGNOSTIC PROCEDURES

13th Edition (Revised in Aug, 2023)

[PROPERTIES]

Source: Prokaryotic expression

Host: *E.coli*

Residues: Glu19~Leu654

Tags: N-terminal GST Tag

Subcellular Location: Secreted

Purity: > 90%

Traits: Freeze-dried powder

Buffer formulation: PBS, pH7.4, containing 0.01% SKL, 5% Trehalose.

Original Concentration: 350µg/mL

Applications: Positive Control; Immunogen; SDS-PAGE; WB.

(May be suitable for use in other assays to be determined by the end user.)

Predicted isoelectric point: 4.7

Predicted Molecular Mass: 96.5kDa

Accurate Molecular Mass: 96kDa as determined by SDS-PAGE reducing conditions.

[USAGE]

Reconstitute in 10mM PBS (pH7.4) to a concentration of 0.1-1.0 mg/mL. Do not vortex.

[STORAGE AND STABILITY]

Storage: Avoid repeated freeze/thaw cycles.

Store at 2-8°C for one month.

Aliquot and store at -80°C for 12 months.

Stability Test: The thermal stability is described by the loss rate. The loss rate was determined by accelerated thermal degradation test, that is, incubate the protein at 37°C for 48h, and no obvious degradation and precipitation were observed. The loss rate is less than 5% within the expiration date under appropriate storage condition.

[SEQUENCE]

	EE	EDKKEDVGTV	VGIDLGTYS	CVGVFKNGRV
EIIANDQGNR	ITPSYVAFTP	EGERLIGDAA	KNQLTSNPEN	TVFDAKRLIG
RTWNDPSVQQ	DIKFLPFKVV	EKKTKPYIQV	DIGGGQTKTF	APEEISAMVI
TKMKETA EAY	LGKKVTHAVV	TVPAYFNDAQ	RQATKDAGTI	AGLNMVRIIN
EPTAAAIAYG	LDKREGEKNI	LVFDLGGGTF	DVSLLTIDNG	VFEVVATNGD
THLGGEDFDQ	RVMEHFIKLY	KKKTGKDVRK	DNRAVQKLRR	EVEKAKRALS
SQHQARIEIE	SFYEGEDFSE	TLTRAKFEEL	NMDLFRSTMK	PVQKVLEDSD
LKKS DIDEIV	LVGGSTRIPK	IQQLVKEFFN	GKEPSRGINP	DEAVAYGA AV
QAGVLSGDQD	TGDLVLLDVC	PLTLGIETVG	GVMTKLIPRN	TVVPTKKSQI
FSTASDNQPT	VTIKVYEGER	PLTKDNHLLG	TFDLTGIPPA	PRGVPQIEVT
FEIDVNGILR	VTAEDKGTGN	KNKITITNDQ	NRLTPEEIER	MVNDAEKFAE
EDKKLKERID	TRNELESYAY	SLKNQIGDKE	KLGGKLSSD	KETMEKAVEE
KIEWLESHQD	ADIEDFKAKK	KELEEIVQPI	ISKLYGSAGP	PPTGEEDTAE
KDEL				

[IDENTIFICATION]

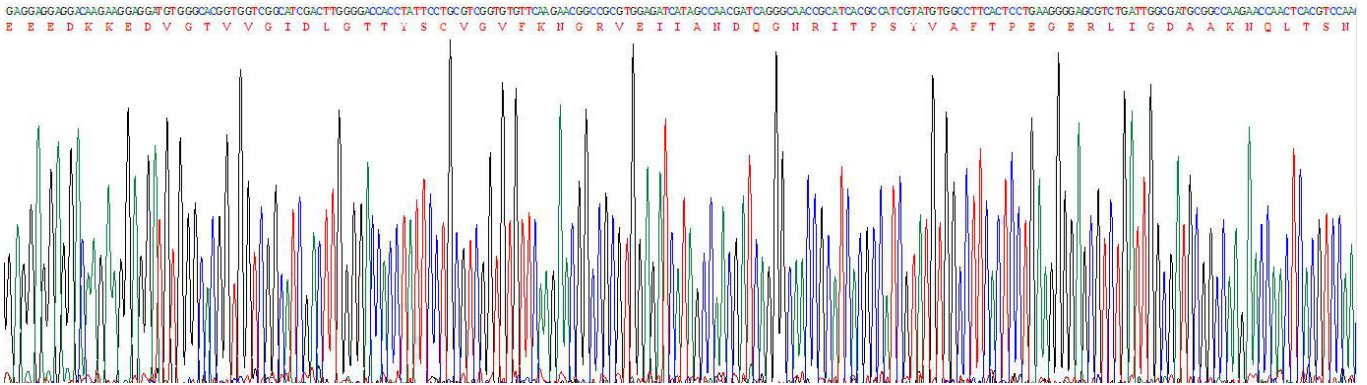


Figure. Gene Sequencing (Extract)

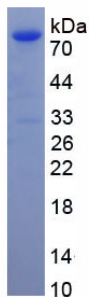


Figure. SDS-PAGE

[IMPORTANT NOTE]

The kit is designed for research use only, we will not be responsible for any issue if the kit was used in clinical diagnostic or any other procedures.