

**RPB805Ra01 100µg**  
**Recombinant High Molecular Weight Kininogen (HMWK)**  
**Organism Species: *Rattus norvegicus* (Rat)**  
***Instruction manual***

FOR RESEARCH USE ONLY  
NOT FOR USE IN CLINICAL DIAGNOSTIC PROCEDURES

---

12th Edition (Revised in Aug, 2016)

**[ PROPERTIES ]**

**Source:** Prokaryotic expression

**Host:** *E.coli*

**Residues:** Leu214~Asp475

**Tags:** N-terminal His and GST Tag

**Subcellular Location:** Secreted, Extracellular matrix

**Purity:** > 95%

**Traits:** Freeze-dried powder

**Buffer formulation:** 20mM Tris, 150mM NaCl, pH8.0, containing 0.01% skl, 5%Trehalose.

**Original Concentration:** 80µg/mL

**Applications:** Positive Control; Immunogen; SDS-PAGE; WB.

(May be suitable for use in other assays to be determined by the end user.)

**Predicted isoelectric point:** 6.5

**Predicted Molecular Mass:** 61.1kDa

**Accurate Molecular Mass:** 59kDa as determined by SDS-PAGE reducing conditions.

**[ USAGE ]**

Reconstitute in ddH<sub>2</sub>O to a concentration of 0.1-0.5 mg/mL. Do not vortex.

**[ STORAGE AND STABILITY ]**

**Storage:** Avoid repeated freeze/thaw cycles.

Store at 2-8°C for one month.

Aliquot and store at -80°C for 12 months.

**Stability Test:** The thermal stability is described by the loss rate. The loss rate was determined by accelerated thermal degradation test, that is, incubate the protein at 37°C for 48h, and no obvious degradation and precipitation were observed. The loss rate is less than 5% within the expiration date under appropriate storage condition.

**[ SEQUENCE ]**

LHEDCVP LPSGDDGECK GNAFVDIHK T IAGFSDSCEF  
YPGDDL FELL PEDCPG CPRN IPVDSPELKE ALGHSIAQLN AENNHTFYFK  
IDTVKKATSQ VVAGTKYVIE FIARETKCSK ESNAELTADC ETKRLGQSLN  
CNANVYMRPW ENKVVPTVKC KVLDMTSVIR RPPGFSPFRA PRVKKPKEST  
TVSPSYIARV QEERDPGNEQ GPIHGHGWLH AKQIKNKNHQ GHKHGHGIGH  
GHQKPHGLGH GHQLKLDL K QQRED

**[ IDENTIFICATION ]**

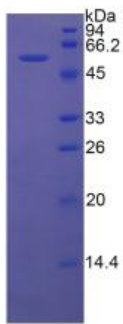


Figure. SDS-PAGE

**[ IMPORTANT NOTE ]**

The kit is designed for research use only, we will not be responsible for any issue if the kit was used in clinical diagnostic or any other procedures.