

**RPC210Hu02 50µg**

**Recombinant Histone Deacetylase 2 (HDAC2)**

**Organism Species: *Homo sapiens (Human)***

***Instruction manual***

FOR RESEARCH USE ONLY

NOT FOR USE IN CLINICAL DIAGNOSTIC PROCEDURES

---

12th Edition (Revised in Aug, 2016)

## **[ PROPERTIES ]**

**Source:** Prokaryotic expression

**Host:** *E.coli*

**Residues:** Met1~Pro488

**Tags:** N-terminal His Tag

**Subcellular Location:** Secreted

**Purity:** > 90%

**Traits:** Freeze-dried powder

**Buffer formulation:** 20mM Tris, 150mM NaCl, pH8.0, containing 0.01% skl, 5%Trehalose.

**Original Concentration:** 200µg/mL

**Applications:** Positive Control; Immunogen; SDS-PAGE; WB.

(May be suitable for use in other assays to be determined by the end user.)

**Predicted isoelectric point:** 5.7

**Predicted Molecular Mass:** 59.1kDa

**Accurate Molecular Mass:** 60kDa as determined by SDS-PAGE reducing conditions.

## **[ USAGE ]**

Reconstitute in 20mM Tris, 150mM NaCl (pH8.0) to a concentration of 0.1-1.0 mg/mL. Do not vortex.

## **[ STORAGE AND STABILITY ]**

**Storage:** Avoid repeated freeze/thaw cycles.

Store at 2-8°C for one month.

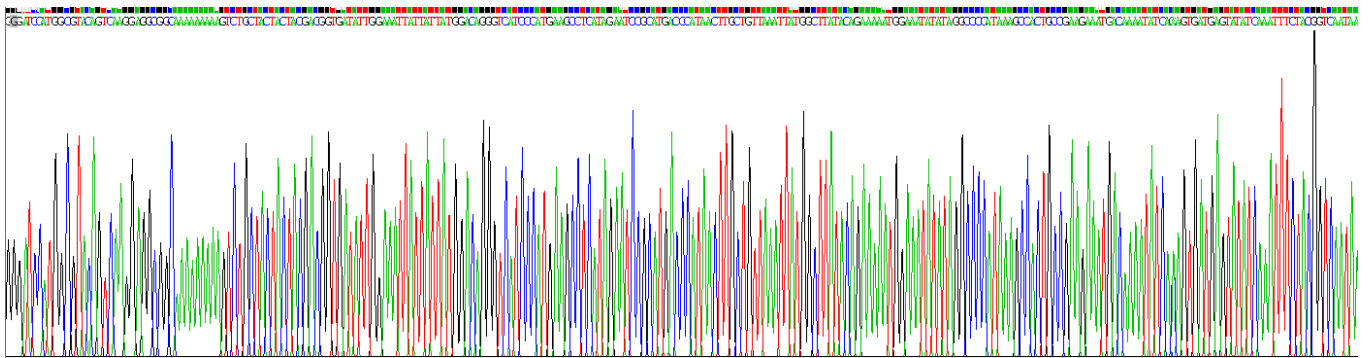
Aliquot and store at -80°C for 12 months.

**Stability Test:** The thermal stability is described by the loss rate. The loss rate was determined by accelerated thermal degradation test, that is, incubate the protein at 37°C for 48h, and no obvious degradation and precipitation were observed. The loss rate is less than 5% within the expiration date under appropriate storage condition.

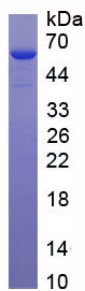
## **[ SEQUENCE ]**

MAYSQGGGKK KVCYYYDGGI GNYYYGQGHP MKPHRIRMTH NLLLNYGLYR  
 KMEIYRPHKA TAEEMTKYHS DEYIKFLRSI RPDNMSEYSK QMQRFNVGED  
 CPVFDGLFEF CQLSTGGSVA GAVKLNRRQT DMAVNWAGGL HHAKKSEASG  
 FCYVNDIVLA ILELLKYHQR VLYIDIDIHH GDGVEEAFYT TDRVMTVSFH  
 KYGEYFPGTG DLRDIGAGKG KYAVNFPMR DGIDDESYGQ IFKPIISKVM  
 EMYQPSAVVL QCGADSLSGD RLGCFLNTVK GHAKCDEVVK TFNLPLLMLG  
 GGGYTIRNVA RCWTYETAVA LDCEIPNELP YNDYFEYFGP DFKLHISPSN  
 MTNQNTPEYM EKIQRFLFEN LRMLPHAPGV QMQAIPEDAV HEDSGDEGE  
 DPKRISIRA SDKRIACDEE FSDSEDEGEG GRRNVADHKK GAKKARIEED  
 KKETEDKKT D VKEEDKSKDN SGEKTDTKGT KSEQLSNP

## [ IDENTIFICATION ]



**Figure . Gene Sequencing (extract)**



**Figure. SDS-PAGE**

## [ IMPORTANT NOTE ]

The kit is designed for research use only, we will not be responsible for any issue if the kit was used in clinical diagnostic or any other procedures.