

**RPE778Hu01 200µg**

**Recombinant Immunoglobulin A1 (IgA1)**

**Organism Species: *Homo sapiens* (Human)**

***Instruction manual***

FOR RESEARCH USE ONLY

NOT FOR USE IN CLINICAL DIAGNOSTIC PROCEDURES

---

13th Edition (Revised in Aug, 2023)

## **[ PROPERTIES ]**

**Source:** Prokaryotic expression

**Host:** *E.coli*

**Residues:** Ala1~Tyr353

**Tags:** N-terminal His Tag

**Subcellular Location:** Membrane, Secreted

**Purity:** > 90%

**Traits:** Freeze-dried powder

**Buffer formulation:** PBS, pH7.4, containing 0.01% Sarcosyl, 5% Trehalose.

**Original Concentration:** 400µg/mL

**Applications:** Positive Control; Immunogen; SDS-PAGE; WB.

(May be suitable for use in other assays to be determined by the end user.)

**Predicted isoelectric point:** 6.5

**Predicted Molecular Mass:** 41.4kDa

**Accurate Molecular Mass:** 44kDa as determined by SDS-PAGE reducing conditions.

## **[ USAGE ]**

Reconstitute in 10mM PBS (pH7.4) to a concentration of 0.1-1.0 mg/mL. Do not vortex.

## **[ STORAGE AND STABILITY ]**

**Storage:** Avoid repeated freeze/thaw cycles.

Store at 2-8°C for one month.

Aliquot and store at -80°C for 12 months.

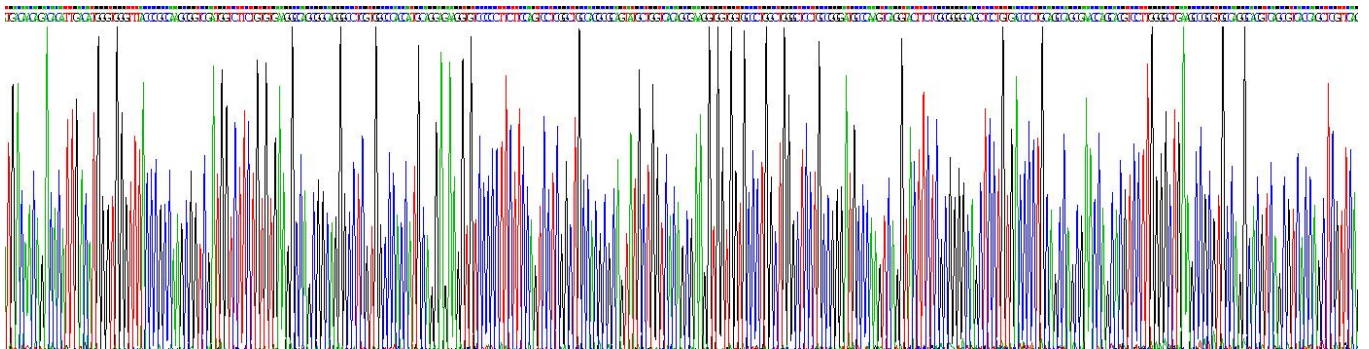
**Stability Test:** The thermal stability is described by the loss rate. The loss rate was determined by accelerated thermal degradation test, that is, incubate the protein at 37°C for 48h, and no obvious degradation and precipitation were observed. The loss rate is less than 5% within the expiration date under appropriate storage condition.

## **[ SEQUENCE ]**

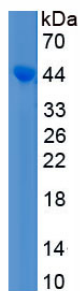
```

ASPTSPKVFP  LSLCSTQPDG  NVVIACLVQG  FFPQEPLSVT  WSESGQGVTA
RNFPPSQDAS  GDLYTTSSQL  TLPATQCLAG  KSVTCHVKHY  TNPSQDVTVP
CPVPSTPPTP  SPSTPPTPSP  SCCHPRLSLH  RPALEDLLLG  SEANLTCTLT
GLRDASGVTF  TWPSSGKSA  VQGPPERDLC  GCYSVSSVLP  GCAEPWNHGK
TFTCTAAYPE  SKTPLTATLS  KSGNTFRPEV  HLLPPPSEEL  ALNELVT LTC
LARGFSPKDV  LVRWLQGSQE  LPREKYLTWA  SRQEPSQGT  TFAVTSILRV
AAEDWKKGDT  FSCMGHEAL  PLAFTQKTID  RLAGKPTHVN  VSVVMAEVDG
TCY
    
```

### [ IDENTIFICATION ]



**Figure. Gene Sequencing (Extract)**



**Figure. SDS-PAGE**

### [ IMPORTANT NOTE ]

The kit is designed for research use only, we will not be responsible for any issue if the kit was used in clinical diagnostic or any other procedures.