

RPA222Bo01 10µg

Recombinant Interferon Beta (IFNβ)

Organism Species: *Bos taurus*; Bovine (Cattle)

Instruction manual

FOR RESEARCH USE ONLY

NOT FOR USE IN CLINICAL DIAGNOSTIC PROCEDURES

12th Edition (Revised in Aug, 2016)

[PROPERTIES]

Source: Prokaryotic expression

Host: *E.coli*

Residues: Arg22~Asp186

Tags: N-terminal His Tag

Subcellular Location: Secreted

Purity: > 90%

Traits: Freeze-dried powder

Buffer formulation: 20mM Tris, 150mM NaCl, pH8.0, containing 0.01% SKL, 5% Trehalose.

Original Concentration: 80µg/mL

Applications: Positive Control; Immunogen; SDS-PAGE; WB.

(May be suitable for use in other assays to be determined by the end user.)

Predicted isoelectric point: 6.6

Predicted Molecular Mass: 23.5kDa

Accurate Molecular Mass: 24kDa as determined by SDS-PAGE reducing conditions.

[USAGE]

Reconstitute in ddH₂O to a concentration of 0.1-1.0 mg/mL. Do not vortex.

[STORAGE AND STABILITY]

Storage: Avoid repeated freeze/thaw cycles.

Store at 2-8°C for one month.

Aliquot and store at -80°C for 12 months.

Stability Test: The thermal stability is described by the loss rate. The loss rate was determined by accelerated thermal degradation test, that is, incubate the protein at 37°C for 48h, and no obvious degradation and precipitation were observed. The loss rate is less than 5% within the expiration date under appropriate storage condition.

[SEQUENCE]

RSYSLRLFQ QRQSLKECQK LLGQLPSTSQ
 HCLEARMDFQ MPEEMKQEQQ FQKEDAILVM YEVLQHIFGI LTRDFSSTGW
 SETIIEDLLK ELYWQMNRLQ PIQKEIMQKQ NSTTEDTIVP HLGKYYFNLM
 QYLESKEYDR CAWTVVQVQI LTNVSFLMRL TGYVRD

[IDENTIFICATION]

TAGGCTACAGCTTGGATTCACACAGTACAGGCTTAAAGAGTCTGAACTCTGGGCGATACCTTCACTCTCACTTGCCTGAGGCGGAGTGGCTTCCGATGCTGAGGAGTGAACAGCAGCAGAGTCCAGAGGAGGTCACATATGGTCAIGTATGAGTCTCCAGCAGCTCTGGCACTCTCAGAGGCTTCCAGGCTTGGCTGCTGAGGCTC
 R S Y S L L R F Q Q S Q S L K E C Q K L L G Q L F S T F Q H C L E A R M D F Q N P E E H K Q A Q Q F Q K E D A I L V M Y E M L Q H I F G I L T R D F S S T G W S E T I

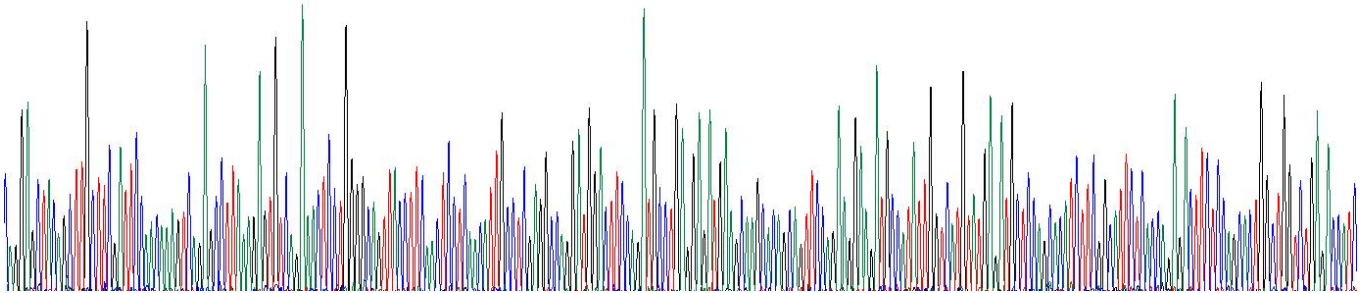


Figure. Gene Sequencing (Extract)

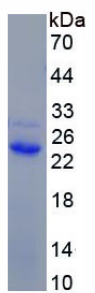


Figure. SDS-PAGE

[IMPORTANT NOTE]

The kit is designed for research use only, we will not be responsible for any issue if the kit was used in clinical diagnostic or any other procedures.