

**RPB862Bo01 50µg**

**Recombinant Interferon Tau (IFNt)**

**Organism Species: *Bos taurus*; Bovine (Cattle)**

***Instruction manual***

**FOR RESEARCH USE ONLY**

**NOT FOR USE IN CLINICAL DIAGNOSTIC PROCEDURES**

---

13th Edition (Revised in Aug, 2023)

## **[ PROPERTIES ]**

**Source:** Prokaryotic expression

**Host:** *E.coli*

**Residues:** Cys24~Leu195

**Tags:** N-terminal His Tag

**Subcellular Location:** Secreted

**Purity:** > 97%

**Traits:** Freeze-dried powder

**Buffer formulation:** 100mMNaHCO<sub>3</sub>, 500mMNaCl, pH8.3, containing 0.01% Sarcosyl, 5% Trehalose.

**Original Concentration:** 200µg/mL

**Applications:** Positive Control; Immunogen; SDS-PAGE; WB.

(May be suitable for use in other assays to be determined by the end user.)

**Predicted isoelectric point:** 5.7

**Predicted Molecular Mass:** 23.5kDa

**Accurate Molecular Mass:** 23kDa as determined by SDS-PAGE reducing conditions.

## **[ USAGE ]**

Reconstitute in ddH<sub>2</sub>O to a concentration of 0.1-1.0 mg/mL. Do not vortex.

## **[ STORAGE AND STABILITY ]**

**Storage:** Avoid repeated freeze/thaw cycles.

Store at 2-8°C for one month.

Aliquot and store at -80°C for 12 months.

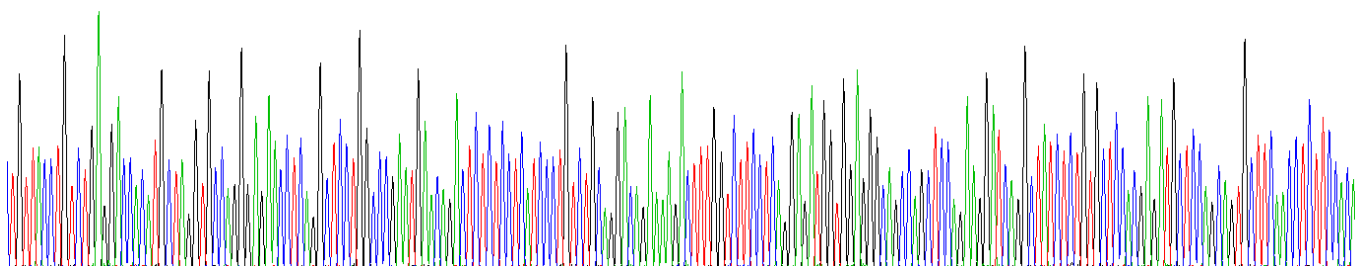
**Stability Test:** The thermal stability is described by the loss rate. The loss rate was determined by accelerated thermal degradation test, that is, incubate the protein at 37°C for 48h, and no obvious degradation and precipitation were observed. The loss rate is less than 5% within the expiration date under appropriate storage condition.

## **[ SEQUENCE ]**

			CYLSEDH	MLGARENLR	LARMNRLSPH
PCLQDRKDFG	LPQEMVEGNQ	LQKDQAISVL	HEMLQQCFNL	FYTEHSSAAW	
NTTLLEQLCT	GLQQQLEDLD	ACLGPMGEK	DSDMGRMGPI	LTVKKYFQGI	
HVYLKEKEYS	DCAWIIRVE	MMRALSSSTT	LQRLRKMGG	DLNSL	

**[ IDENTIFICATION ]**

TGTGTTCTGTCGAGGACCACTGCTAGGTGTCAGGGAGAACCTCAGGCTCTGGCGGAGTGAACAGACTCTCTCTCTATCTCTGTTCTGAGGACAGAAAAGCTTTGGTCTCTCTCAGGAGATGGTGGAGGCGAAGCACTCAGAGGGTCAAGCTATCTCTGTGCTCCAGAGATCTCTCGAGATCTTAACTCTTCAAT  
 CYLSEdHMLGARENIRLLARMNRLSPHPClQDRKDFGLPQEMVEGSGQLQKDQAISVLIHEMLQQCFNLFHI



### Figure. Gene Sequencing (Extract)

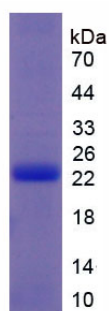


Figure. SDS-PAGE

**[ IMPORTANT NOTE ]**

The kit is designed for research use only, we will not be responsible for any issue if the kit was used in clinical diagnostic or any other procedures.