

**RPH819Mu01 10µg**  
**Recombinant Interleukin 1 Receptor Accessory Protein (IL1RAP)**  
**Organism Species: *Mus musculus* (Mouse)**  
***Instruction manual***

FOR RESEARCH USE ONLY  
NOT FOR USE IN CLINICAL DIAGNOSTIC PROCEDURES

---

12th Edition (Revised in Aug, 2016)

**[ PROPERTIES ]**

**Source:** Prokaryotic expression

**Host:** *E.coli*

**Residues:** Ser21~Thr367

**Tags:** N-terminal His Tag

**Subcellular Location:** Membrane, Secreted

**Purity:** > 90%

**Traits:** Freeze-dried powder

**Buffer formulation:** 100mMNaHCO<sub>3</sub>, 500mMNaCl, pH8.3, containing 0.01% SKL, 5% Trehalose.

**Original Concentration:** 200µg/mL

**Applications:** Positive Control; Immunogen; SDS-PAGE; WB.

(May be suitable for use in other assays to be determined by the end user.)

**Predicted isoelectric point:** 6.0

**Predicted Molecular Mass:** 43.7kDa

**Accurate Molecular Mass:** 44kDa as determined by SDS-PAGE reducing conditions.

**[ USAGE ]**

Reconstitute in ddH<sub>2</sub>O to a concentration of 0.1-1.0 mg/mL. Do not vortex.

**[ STORAGE AND STABILITY ]**

**Storage:** Avoid repeated freeze/thaw cycles.

Store at 2-8°C for one month.

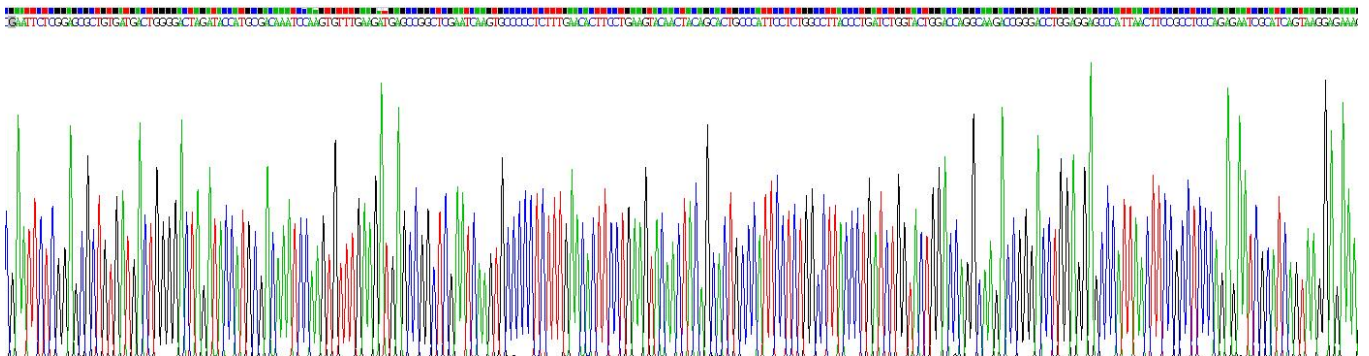
Aliquot and store at -80°C for 12 months.

**Stability Test:** The thermal stability is described by the loss rate. The loss rate was determined by accelerated thermal degradation test, that is, incubate the protein at 37°C for 48h, and no obvious degradation and precipitation were observed. The loss rate is less than 5% within the expiration date under appropriate storage condition.

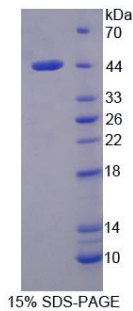
**[ SEQUENCE ]**

SERCDDWGLD TMRQIQVFED EPARIKCPLF  
 EHFLKYNYST AHSSGLTLIW YWTRQDRDLE EPINFRLPEN RISKEKDVW  
 FRPTLLNDTG NYTCMLRNTT YCSKVAFPLE VVQKDFNS AMRFPVHKMY  
 IEHGIHKITC PNVDGYFPSS VKPSVTWYKG CTEIVDFHNV LPEGMNLFF  
 IPLVSNNGNY TCVVYPENG RLFHLTRTVT VKVVGSPKDA LPPQIYSPND  
 RVVYEKEPGE ELVIPCKVYF SFIMDSHNEV WWTIDGKKPD DVTVDITINE  
 SVSYSSTEDE TRTQILSIKK VTPEDLRRNY VCHARNTKGE AEQAAKVKQK  
 VIPPRYTVEL ACGFGAT

**[ IDENTIFICATION ]**



**Figure . Gene Sequencing (extract)**



**[ IMPORTANT NOTE ]**

The kit is designed for research use only, we will not be responsible for any issue if the kit was used in clinical diagnostic or any other procedures.