

RPX296Hu01 100ug

Recombinant Interleukin 27 (IL27)

Organism Species: *Homo sapiens* (Human)

Instruction manual

FOR RESEARCH USE ONLY

NOT FOR USE IN CLINICAL DIAGNOSTIC PROCEDURES

12th Edition (Revised in Aug, 2016)

[PROPERTIES]

Source: Prokaryotic expression

Host: *E.coli*

Residues: Phe29~Pro243+GGGGS*3+Arg21~Lys229

Tags: N-terminal His Tag

Subcellular Location: Secreted

Purity: > 90%

Traits: Freeze-dried powder

Buffer formulation: PBS, pH7.4, containing 0.01% SKL, 5% Trehalose.

Original Concentration: 200µg/mL

Applications: Positive Control; Immunogen; SDS-PAGE; WB.

(May be suitable for use in other assays to be determined by the end user.)

Predicted isoelectric point: 9.0

Predicted Molecular Mass: 52.6kDa

Accurate Molecular Mass: 50kDa as determined by SDS-PAGE reducing conditions.

[USAGE]

Reconstitute in 10mM PBS (pH7.4) to a concentration of 0.1-1.0 mg/mL. Do not vortex.

[STORAGE AND STABILITY]

Storage: Avoid repeated freeze/thaw cycles.

Store at 2-8°C for one month.

Aliquot and store at -80°C for 12 months.

Stability Test: The thermal stability is described by the loss rate. The loss rate was determined by accelerated thermal degradation test, that is, incubate the protein at 37°C for 48h, and no obvious degradation and precipitation were observed. The loss rate is less than 5% within the expiration date under appropriate storage condition.

[SEQUENCE]

```

FP RPPGRPQLSL QELRREFTVS
LHLARKLLSE VRQAHRF AE SHLPGVNLYL LPLGEQLPDV SLTFQAWRRL
SDPERLCFIS TTLQPFHALL GGLGTQGRWT NMERMQLWAM RDLRDLQRH
LRFQVLAAGF NLPEEEEEEE EEEEEERKGL LPGALGSALQ GPAQVSWPQL
LSTYRLLHSL ELVLSRAVRE LLLLKAGHS VWPLGFPTLS PQP
GGGGSGGGGSGGGGS

RKGPPAALT PRVQCASRY PIAVDCSWTL
PPAPNSTSPV SFIATYRLGM AARGHSWPCL QQTPTSTSTCT ITDVQLFSMA
PYVLNVTAVH PWGSSSSFVP FITEHIIKPD PPEGVRLSPL AERQLQVQWE
PPGSWPFPEI FSLKYWIRYK RQGAARFHRV GPIEATSFIL RAVRPRARYY
VQVAAQDLTD YGELSDWSLP ATATMSLGK

```

[IDENTIFICATION]

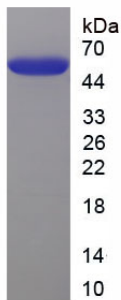


Figure. SDS-PAGE

[IMPORTANT NOTE]

The kit is designed for research use only, we will not be responsible for any issue if the kit was used in clinical diagnostic or any other procedures.