

**RPA522Mu01 10µg**

**Recombinant Keratin 14 (KRT14)**

**Organism Species: *Mus musculus* (Mouse)**

***Instruction manual***

FOR RESEARCH USE ONLY

NOT FOR USE IN CLINICAL DIAGNOSTIC PROCEDURES

---

12th Edition (Revised in Aug, 2016)

## **[ PROPERTIES ]**

**Source:** Prokaryotic expression

**Host:** *E.coli*

**Residues:** Met1~Asn484

**Tags:** N-terminal His Tag

**Subcellular Location:** Nucleus, Cytoplasm

**Purity:** > 97%

**Traits:** Freeze-dried powder

**Buffer formulation:** 20mM Tris, 150mM NaCl, pH8.0, containing 0.01% SKL, 5% Trehalose.

**Original Concentration:** 200µg/mL

**Applications:** Positive Control; Immunogen; SDS-PAGE; WB.

(May be suitable for use in other assays to be determined by the end user.)

**Predicted isoelectric point:** 5.1

**Predicted Molecular Mass:** 56.6kDa

**Accurate Molecular Mass:** 57kDa as determined by SDS-PAGE reducing conditions.

## **[ USAGE ]**

Reconstitute in 20mM Tris, 150mM NaCl (pH8.0) to a concentration of 0.1-1.0 mg/mL. Do not vortex.

## **[ STORAGE AND STABILITY ]**

**Storage:** Avoid repeated freeze/thaw cycles.

Store at 2-8°C for one month.

Aliquot and store at -80°C for 12 months.

**Stability Test:** The thermal stability is described by the loss rate. The loss rate was determined by accelerated thermal degradation test, that is, incubate the protein at 37°C for 48h, and no obvious degradation and precipitation were observed. The loss rate is less than 5% within the expiration date under appropriate storage condition.

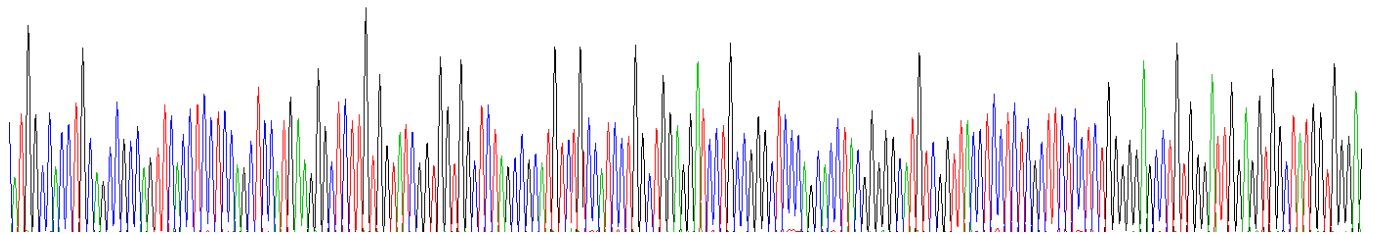
## **[ SEQUENCE ]**

```

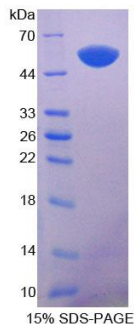
MATCSRQFTS SSSMKGSCGI GGGSSRMSSI LAGGSCRAPS TYGGMSVTSS
RFSSGGACGI GGGYGGSFSS SSFGGGLGSG FGGRFDGFGG GFGGGLGGGF
GGGLGGGLGG GIGDGLLVGS EKVTMQNLND RLATYLDKVR ALEEANTELE
VKIRDWYQRQ RPTEIKDYSP YFKTIEDLKS KILAATVDNA NVLLQIDNAR
LAADDFR TKF ETEQSLRMSV EADINGLRRV LDELTARAD LEMQIESLKE
ELAYLKKNHE EEMASMRQV GGDVNVEMDA APGVDLSRIL NEMRDQYEKM
AEKNRKDAEE WFFSKTEELN REVATNSELV QSGKSEISEL RRTMQNLEIE
LQSQLSMKAS LENNLEETKG RYCMQLAQIQ EMIGSVEEQL AQLRCEMEQQ
NQEYKILLDV KTRLEQEIAT YRRLLEGEDA HLSSSQFSSS SQFSSGSQSS
RDVTSTNRQI RTKVMDVHDG KVVSTHEQVL RTKN
  
```

## [ IDENTIFICATION ]

ATGGGCACTGCAAGCCGCTTCACTCTCAGCTCAGTGAAGGCTCTGTGTGATGCGTGGTGGCTCTAAGCGGATGTCTGCATCTCGGCTGGAGGATCTCGCGGGCTCCAGCACTAAGGAGGCAATGTGGGTTACTCTCTCGCTTCTCTCTCTGCGGGAGCTGTGGGATTGGAGGTGGCTATGCTGGGK  
 H A T C S R Q F T S S S S M K G S C G I G G G S S R M S I L A G G S C R A P S T Y G G H S V T S S R F S S G G A C G I G G G Y G G S



**Figure. Gene Sequencing (Extract)**



## [ IMPORTANT NOTE ]

The kit is designed for research use only, we will not be responsible for any issue if the kit was used in clinical diagnostic or any other procedures.