

**RPB239Hu01 10µg**

**Recombinant Keratin 19 (KRT19)**

**Organism Species: *Homo sapiens* (Human)**

***Instruction manual***

FOR RESEARCH USE ONLY

NOT FOR USE IN CLINICAL DIAGNOSTIC PROCEDURES

---

12th Edition (Revised in Aug, 2016)

## **[ PROPERTIES ]**

**Source:** Prokaryotic expression

**Host:** *E.coli*

**Residues:** Leu245~Tyr391

**Tags:** N-terminal His Tag

**Subcellular Location:**

**Purity:** > 95%

**Traits:** Freeze-dried powder

**Buffer formulation:** PBS, pH7.4.

**Original Concentration:** 200µg/mL

**Applications:** Positive Control; Immunogen; SDS-PAGE; WB.

(May be suitable for use in other assays to be determined by the end user.)

**Predicted isoelectric point:** 5.1

**Predicted Molecular Mass:** 18.4kDa

**Accurate Molecular Mass:** 18kDa as determined by SDS-PAGE reducing conditions.

## **[ USAGE ]**

Reconstitute in 10mM PBS (pH7.4) to a concentration of 0.1-1.0 mg/mL. Do not vortex.

## **[ STORAGE AND STABILITY ]**

**Storage:** Avoid repeated freeze/thaw cycles.

Store at 2-8°C for one month.

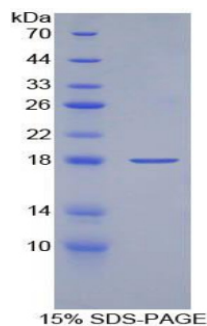
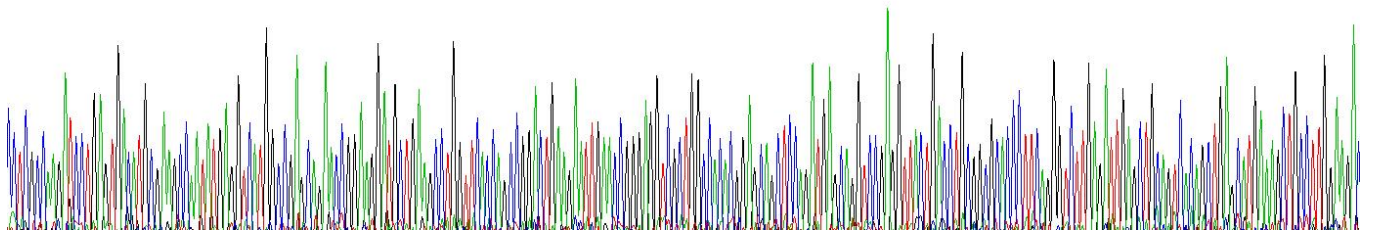
Aliquot and store at -80°C for 12 months.

**Stability Test:** The thermal stability is described by the loss rate. The loss rate was determined by accelerated thermal degradation test, that is, incubate the protein at 37°C for 48h, and no obvious degradation and precipitation were observed. The loss rate is less than 5% within the expiration date under appropriate storage condition.

## **[ SEQUENCE ]**

DMRSQYEVMA EQNRKDAEAW FTSRTEELNR EVAGHTEQLQ MSRSEVTDLR  
RTLQGLEIEL QSQLSMKAAL EDTLAETEAR FGAQLAHIQA LISGIEAQLG  
DVRADSERQN QEYQRLMDIK SRLEQEIATY RSLLEGQEDH Y

TGTGGCGAGTCTGTGCTGGCGCCGATATGGCTATGTGGCGCGCGAGCGCGAGCTCTGAGCCCTGGTCTCGACCGGCTGAGGATTGACGCGGGTCTGGCCCGCGCGGCTCGGATGCGAGCGCGGCTCTGACCTGGCGCGCGCCCTTCTGGCTCTGAGTACCTGGCTCGCTGCGATGAGGATGCTGCTGGAGC  
 LAKILSDMRSQYEVHAEQNRKDAEAWFTSRTEELNREVAAGHTEQLQMSRSEVTDLRRTIQGLEIELQSQILSNKAALED



The bit is defined for a general  $n$ -bit number  $x$  and the corresponding function  $f$  is given as if the bit is