

**RPA486Hu01 100µg**

**Recombinant Keratin 6B (KRT6B)**

**Organism Species: *Homo sapiens (Human)***

***Instruction manual***

**FOR RESEARCH USE ONLY**

**NOT FOR USE IN CLINICAL DIAGNOSTIC PROCEDURES**

---

12th Edition (Revised in Aug, 2016)

## **[ PROPERTIES ]**

**Source:** Prokaryotic expression

**Host:** *E.coli*

**Residues:** Met1~His564

**Tags:** N-terminal His Tag

**Subcellular Location:** Cytoplasm

**Purity:** > 95%

**Traits:** Freeze-dried powder

**Buffer formulation:** 20mM Tris, 150mM NaCl, pH8.0, containing 0.01% SKL, 5% Trehalose.

**Original Concentration:** 200µg/mL

**Applications:** Positive Control; Immunogen; SDS-PAGE; WB.

(May be suitable for use in other assays to be determined by the end user.)

**Predicted isoelectric point:** 8.2

**Predicted Molecular Mass:** 63.7kDa

**Accurate Molecular Mass:** 64kDa as determined by SDS-PAGE reducing conditions.

## **[ USAGE ]**

Reconstitute in 20mM Tris, 150mM NaCl (pH8.0) to a concentration of 0.1-1.0 mg/mL. Do not vortex.

## **[ STORAGE AND STABILITY ]**

**Storage:** Avoid repeated freeze/thaw cycles.

Store at 2-8°C for one month.

Aliquot and store at -80°C for 12 months.

**Stability Test:** The thermal stability is described by the loss rate. The loss rate was determined by accelerated thermal degradation test, that is, incubate the protein at 37°C for 48h, and no obvious degradation and precipitation were observed. The loss rate is less than 5% within the expiration date under appropriate storage condition.

## **[ SEQUENCE ]**

MASTSTTIRS HSSRRGFSA NSARLPGVSR SGFSSISVSR SRGSGGLGGA  
 CGGAGFGSRS LYGLGGSKRI SIGGGSCAIS GGYGSRAGGS YGFGGAGSGF  
 GFGGGAGIGF GLGGGAGLAG GFGGPGFPVC PPGGIQEVTV NQSLLTPLNL  
 QIDPAIQVRV AEEREQIKTL NNKFASFIDK VRFLEQQNKV LDTKWTLTQE  
 QGTKTVRQNL EPLFEQYINN LRRQLDNIVG ERGRDSELR NMQDLVEDLK  
 NKYEDEINKR TAAENEFVTL KKDVDAAAYMN KVELQAKADT LTDEINFLRA  
 LYDAELSQQM THISDTSVVL SMDNNRNLDL DSIIAEVKAQ YEEIAQRSRA  
 EAESWYQTKY EELQITAGRH GDDLNRNTKQE IAEINRMIQR LRSEIDHVKK  
 QCANLQAAIA DAEQRGEMAL KDAKNKLEGL EDALQKAKQD LARLLKEYQE  
 LMNVKLALDV EIATYRKLE GEECRLNGEG VGQVNISVVQ STVSSGYGGA  
 SGVGSGGLGLG GGSSYSYSGS LGVGGGFSSS SGRATGGGLS SVGGGSSTIK  
 YTTTSSSSRK SYKH

## [ IDENTIFICATION ]

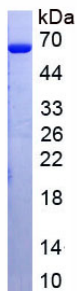


Figure. SDS-PAGE

## [ IMPORTANT NOTE ]

The kit is designed for research use only, we will not be responsible for any issue if the kit was used in clinical diagnostic or any other procedures.