

RPF518Hu01 50µg

Recombinant Kinesin Family, Member 18A (KIF18A)

Organism Species: *Homo sapiens (Human)*

Instruction manual

FOR RESEARCH USE ONLY

NOT FOR USE IN CLINICAL DIAGNOSTIC PROCEDURES

13th Edition (Revised in Aug, 2023)

[PROPERTIES]

Source: Prokaryotic expression

Host: *E.coli*

Residues: Met1~Lys453

Tags: N-terminal His Tag

Subcellular Location: Nucleus, Cytoplasm

Purity: > 95%

Traits: Freeze-dried powder

Buffer formulation: PBS, pH7.4, containing 0.01% SKL, 5% Trehalose .

Original Concentration: 400µg/mL

Applications: Positive Control; Immunogen; SDS-PAGE; WB.

(May be suitable for use in other assays to be determined by the end user.)

Predicted isoelectric point: 8.6

Predicted Molecular Mass: 55.2kDa

Accurate Molecular Mass: 55kDa as determined by SDS-PAGE reducing conditions.

[USAGE]

Reconstitute in 10mM PBS (pH7.4) to a concentration of 0.1-1.0 mg/mL. Do not vortex.

[STORAGE AND STABILITY]

Storage: Avoid repeated freeze/thaw cycles.

Store at 2-8°C for one month.

Aliquot and store at -80°C for 12 months.

Stability Test: The thermal stability is described by the loss rate. The loss rate was determined by accelerated thermal degradation test, that is, incubate the protein at 37°C for 48h, and no obvious degradation and precipitation were observed. The loss rate is less than 5% within the expiration date under appropriate storage condition.

[SEQUENCE]

```

MSVTEEDLCH HMKVVVRVRP ENTKEKAAGF HKVVHVVDKH ILVFDPKQEE
VSFFHGKKT NQNVIKKQNK DLKFVFDVAV DETSTQSEVF EHTTKPILRS
FLNGYNCTVL AYGATGAGKT HTMLGSADEP GVMYLTMLHL YKCMDEIKEE
KICSTAVSYL EVYNEQIRDL LVNSGPLAVR EDTQKGVVH GLTLHQPSS
EEILHLLDNG NKNRTQHPTD MNATSSRSHA VFQIYLRQQD KTASINQNR
IAKMSLIDLA GSERASTGA KGTRFVEGTN INRLLALGN VINALADSKR
KNQHIPPYNS KLTRLLKDSL GGNCQTIMIA AVSPSSVFDYD DTYNLKYAN
RAKDIKSSLK SNVLNVNHI TQYVKICNEQ KAEILLLKEK LKAYEEQKAF
TNENDQAKLM ISNPQEKEIE RFQEILNCLF QNREEIRQEY LKLEMLLKEN
ELK
    
```

[IDENTIFICATION]

GAATTCATGTCTGTCACTGAGGAAGACTGTGCACCATATGAAAAGTAGTAGTTCGTGTACGTCCGGAAACACTAAAGAAAAGCAAGCTGGATTTCATAAA GTGGTTCATGTTGTGGATAAACATATCCTAGTTTTT GATCCCAACAAAGAGAAAGTCAGTTTTTTCATGGAAA GAA

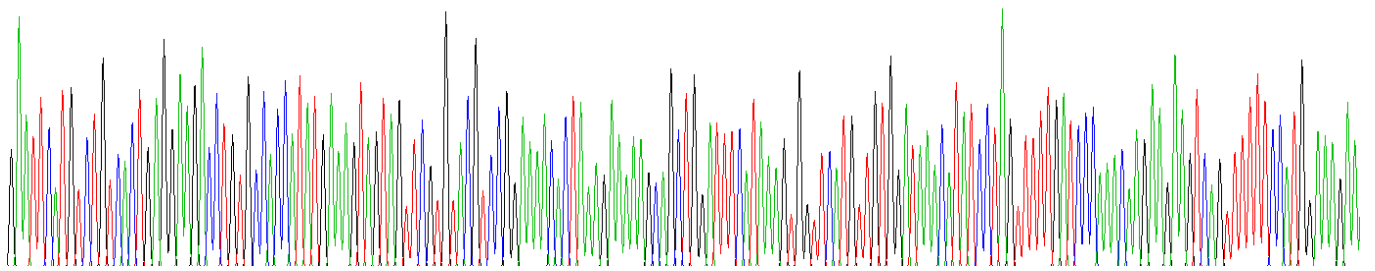


Figure . Gene Sequencing (extract)

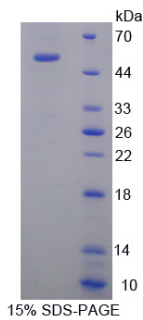


Figure. SDS-PAGE

[IMPORTANT NOTE]

The kit is designed for research use only, we will not be responsible for any issue if the kit was used in clinical diagnostic or any other procedures.