

RPA780Bo01 50µg

Recombinant Lactoferrin (LTF)

Organism Species: *Bos taurus*; Bovine (Cattle)

Instruction manual

FOR RESEARCH USE ONLY

NOT FOR USE IN CLINICAL DIAGNOSTIC PROCEDURES

13th Edition (Revised in Aug, 2023)

[**PROPERTIES**]

Source: Prokaryotic expression

Host: *E.coli*

Residues: Val25~Glu352

Tags: N-terminal His Tag

Subcellular Location: Secreted

Purity: > 90%

Traits: Freeze-dried powder

Buffer formulation: PBS, pH7.4, containing 0.01% Sarcosyl, 5% Trehalose.

Original Concentration: 450µg/mL

Applications: Positive Control; Immunogen; SDS-PAGE; WB.

(May be suitable for use in other assays to be determined by the end user.)

Predicted isoelectric point: 9.2

Predicted Molecular Mass: 40.4kDa

Accurate Molecular Mass: 40kDa as determined by SDS-PAGE reducing conditions.

[**USAGE**]

Reconstitute in 10mM PBS (pH7.4) to a concentration of 0.1-1.0 mg/mL. Do not vortex.

[**STORAGE AND STABILITY**]

Storage: Avoid repeated freeze/thaw cycles.

Store at 2-8°C for one month.

Aliquot and store at -80°C for 12 months.

Stability Test: The thermal stability is described by the loss rate. The loss rate was determined by accelerated thermal degradation test, that is, incubate the protein at 37°C for 48h, and no obvious degradation and precipitation were observed. The loss rate is less than 5% within the expiration date under appropriate storage condition.

[**SEQUENCE**]

		VRWCTI	SQPEWFKCRR	WQWRMKKLGA	PSITCVRRAF
ALECIRIAIE	KKADAVTLDG	GMVFEAGRDP	YKLRPVAAEI	YGTKEPQTH	YYAVAVVKKG
SNFQLDQLQG	RKSCHTGLGR	SAGWIIPMGI	LRPYLSWTES	LEPLQGAVAK	FFSASCVPCI
DRQAYPNLCQ	LCKGEGENQC	ACSSREPYFG	YSGAFKCLQD	GAGDVAFVKE	TTVFENLPEK
ADRDQYELLC	LNNSRAPVDA	FKECHLAQVP	SHAVVARSVD	GKEDLIWKLL	SKAQEKFGKN
KSRSFQLFGS	PPGQRDLLFK	DSALGFLRIP	SKVDSALYLG	SRYLTTLKNL	RE

[IDENTIFICATION]

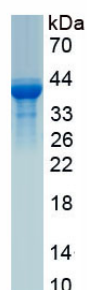


Figure. SDS-PAGE

[IMPORTANT NOTE]

The kit is designed for research use only, we will not be responsible for any issue if the kit was used in clinical diagnostic or any other procedures.