

RPA780Ca01 200µg

Recombinant Lactoferrin (LTF)

Organism Species: *Canis familiaris*; Canine (Dog)

Instruction manual

FOR RESEARCH USE ONLY

NOT FOR USE IN CLINICAL DIAGNOSTIC PROCEDURES

12th Edition (Revised in Aug, 2016)

[PROPERTIES]

Source: Prokaryotic expression

Host: *E.coli*

Residues: Cys28~Lys351

Tags: N-terminal His Tag

Subcellular Location: Secreted

Purity: > 95%

Traits: Freeze-dried powder

Buffer formulation: PBS, pH7.4, containing 0.01% SKL, 5% Trehalose.

Original Concentration: 1200µg/mL

Applications: Positive Control; Immunogen; SDS-PAGE; WB.

(May be suitable for use in other assays to be determined by the end user.)

Predicted isoelectric point: 8.3

Predicted Molecular Mass: 42.1kDa

Accurate Molecular Mass: 42kDa as determined by SDS-PAGE reducing conditions.

[USAGE]

Reconstitute in PBS (pH7.4) to a concentration of 0.1-1.0 mg/mL. Do not vortex.

[STORAGE AND STABILITY]

Storage: Avoid repeated freeze/thaw cycles.

Store at 2-8°C for one month.

Aliquot and store at -80°C for 12 months.

Stability Test: The thermal stability is described by the loss rate. The loss rate was determined by accelerated thermal degradation test, that is, incubate the protein at 37°C for 48h, and no obvious degradation and precipitation were observed. The loss rate is less than 5% within the expiration date under appropriate storage condition.

[SEQUENCE]

```
CTT SKAEAKKCSK FQVNMKKVGG
PIVSCTRKAS RQECIQAIKA NKADAVTLDG GLVFEAGLEP NKLRPIAAEV
YGTQTKQQIH YYAVAIKKG TNFQLNQLQG VRSCHTGLGR SAGWNIPIGT
LRPFLNWTGP PEPLEEAVAK FFSASCVPCA DGKQYPNLCR LCAGTEQNKC
ACSSQEPYFG YSGAFKCLQD GAGDVAFVRD STVFENLPDK ADQDKYELLC
LNNTRKPVDA FKDCHLARVP SHAVVARSVG GKEDLIWRL QKAQENFGKD
KSSAFQLFGS PSGEKDLLFK DSAIGFLRIP SNIDSELYLG FNYINAIQSL
K
```

[IDENTIFICATION]

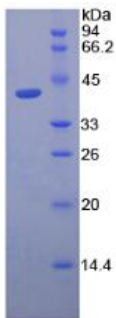


Figure. SDS-PAGE

[IMPORTANT NOTE]

The kit is designed for research use only, we will not be responsible for any issue if the kit was used in clinical diagnostic or any other procedures.