

RPB766Mu01 10µg

Recombinant Lectin Galactoside Binding, Soluble 3 Binding Protein (LGALS3BP)

Organism Species: *Mus musculus* (Mouse)

Instruction manual

FOR RESEARCH USE ONLY

NOT FOR USE IN CLINICAL DIAGNOSTIC PROCEDURES

13th Edition (Revised in Aug, 2023)

[PROPERTIES]

Source: Prokaryotic expression

Host: *E.coli*

Residues: Thr19~Val577

Tags: N-terminal His Tag

Subcellular Location: Secreted, Extracellular matrix

Purity: > 90%

Traits: Freeze-dried powder

Buffer formulation: PBS, pH7.4, containing 0.01% Sarcosyl, 5% Trehalose.

Original Concentration: 800µg/mL

Applications: Positive Control; Immunogen; SDS-PAGE; WB.

(May be suitable for use in other assays to be determined by the end user.)

Predicted isoelectric point: 5.0

Predicted Molecular Mass: 66.0kDa

Accurate Molecular Mass: 66kDa as determined by SDS-PAGE reducing conditions.

[USAGE]

Reconstitute in 10mM PBS (pH7.4) to a concentration of 0.1-1.0 mg/mL. Do not vortex.

[STORAGE AND STABILITY]

Storage: Avoid repeated freeze/thaw cycles.

Store at 2-8°C for one month.

Aliquot and store at -80°C for 12 months.

Stability Test: The thermal stability is described by the loss rate. The loss rate was determined by accelerated thermal degradation test, that is, incubate the protein at 37°C for 48h, and no obvious degradation and precipitation were observed. The loss rate is less than 5% within the expiration date under appropriate storage condition.

[SEQUENCE]

```

      TE DGMRLVNGA SANEGRVEIF YRGRWGTVCD
NLWNLLDAHV VCRALGYENA TQALGRAAFG PGKGPIMLDE VECTGTESSL
ASCRSLGWMV SRCGHEKDAG VVCSNDTTGL HILDLSGELS DALGQIFDSQ
QGCDLFIQVT GQGYEDLSLC AHTLILRTNP EAQALWQVVG SSVIMRVDAE
CMPVVRDFLR YFYSRRIEVS MSSVKCLHKL ASAYGATELQ DYCGRLFATL
LPQDPTFHTP LDLYAYARAT GDSMLELDCV QFLAWNFEPL TQSESWSAVP
TTLIQALLPK SELAVSSELD LLKAVDQWST ETIASHEDIE RLVEQVRFPM
MLPQELFELQ FNLSLYQDHQ ALFQRKTMQA LEFHTVPVEV LAKYKGLNLT
EDTYKPRLYT SSTWSSLVMA STWRAQRYEY NRYNQLYTYG YGSVARYNSY
QSFQTPQHPS FLFKDKQISW SATYLPTMQS CWNYGFSCTS NELPVLGLTT
SSYSNPTIGY ENRVLILCGG YSVVDVTSFE GSKAPIPTAL DTNSSKTPSL
FPCASGAFSS FRVVIRPFYL TNSTDMV

```

[IDENTIFICATION]

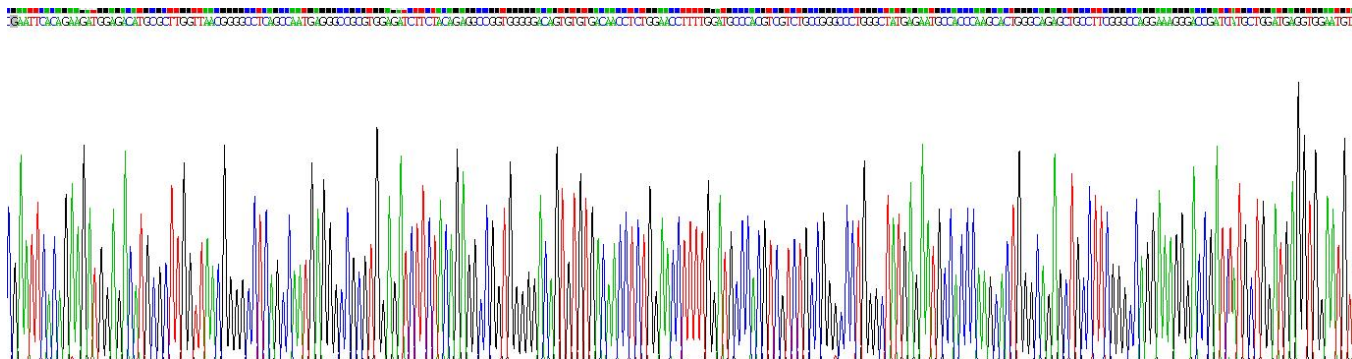


Figure . Gene Sequencing (extract)

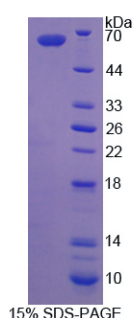


Figure. SDS-PAGE

[IMPORTANT NOTE]

The kit is designed for research use only, we will not be responsible for any issue if the kit was used in clinical diagnostic or any other procedures.