

RPA842Hu01 50µg

Recombinant Lipoprotein, a (Lpa)

Organism Species: *Homo sapiens (Human)*

Instruction manual

FOR RESEARCH USE ONLY

NOT FOR USE IN CLINICAL DIAGNOSTIC PROCEDURES

13th Edition (Revised in Aug, 2023)

[PROPERTIES]

Source: Prokaryotic expression

Host: *E.coli*

Residues: Asp1719~Arg2038

Tags: N-terminal His Tag

Subcellular Location: Secreted

Purity: > 80%

Traits: Freeze-dried powder

Buffer formulation: PBS, pH7.4, containing 0.01% Sarcosyl, 5% Trehalose.

Original Concentration: 200µg/mL

Applications: Positive Control; Immunogen; SDS-PAGE; WB.

(May be suitable for use in other assays to be determined by the end user.)

Predicted isoelectric point: 8.4

Predicted Molecular Mass: 39.1kDa

Accurate Molecular Mass: 39kDa as determined by SDS-PAGE reducing conditions.

[USAGE]

Reconstitute in 10mM PBS (pH7.4) to a concentration of 0.1-1.0 mg/mL. Do not vortex.

[STORAGE AND STABILITY]

Storage: Avoid repeated freeze/thaw cycles.

Store at 2-8°C for one month.

Aliquot and store at -80°C for 12 months.

Stability Test: The thermal stability is described by the loss rate. The loss rate was determined by accelerated thermal degradation test, that is, incubate the protein at 37°C for 48h, and no obvious degradation and precipitation were observed. The loss rate is less than 5% within the expiration date under appropriate storage condition.

[SEQUENCE]

		DC	MFGNGKGYRG	KKATTVTGTP	CQEWAQEPH
RHSTFIPGTN	KWAGLEKNYC	RNPDG DINGP	WCYTMNPRKL	FDYCDIPLCA	
SSSFDCGKPQ	VEPKKCPGSI	VGGCVAHPHS	WPWQVSLRTR	FGKHFCGGTL	
ISPEWVLTA	HCLKKSSRPS	SYKVILGAHQ	EVNLESHVQE	IEVSRLFLEP	
TQADIALLL	SRPAVITDKV	MPACLPSPDY	MVTARTECYI	TGWGETQGTF	
GTGLLKEAQL	LVIENEVCNH	YKYICAEHLA	RGTDSCQGDS	GGPLVCFEKD	
KYILQGVTSW	GLGCARPKNP	GVYARVSRFV	TWIEGMMR		

[IDENTIFICATION]

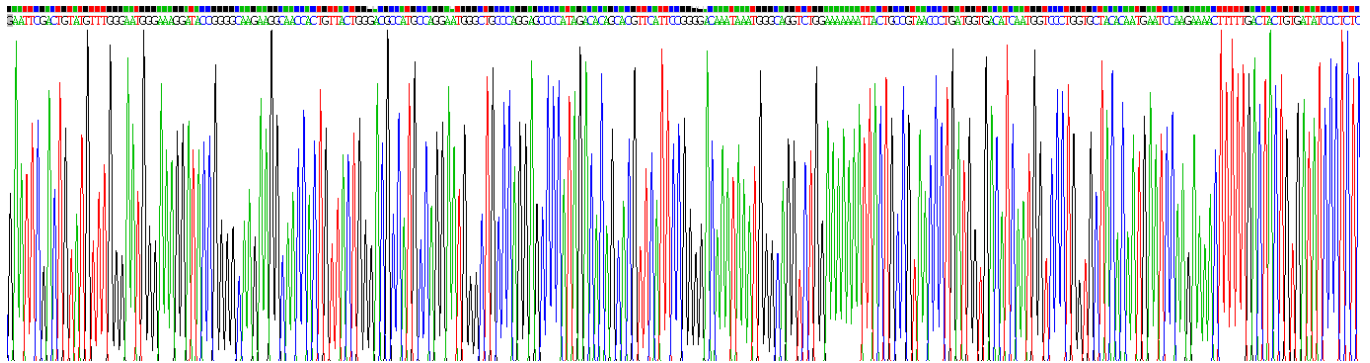


Figure . Gene Sequencing (extract)

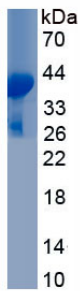


Figure. SDS-PAGE

[IMPORTANT NOTE]

The kit is designed for research use only, we will not be responsible for any issue if the kit was used in clinical diagnostic or any other procedures.