

**RPB010HU02 50µg**

**Recombinant Low Density Lipoprotein Receptor Related Protein 1 (LRP1)**

**Organism Species: *Homo sapiens (Human)***

***Instruction manual***

**FOR RESEARCH USE ONLY**

**NOT FOR USE IN CLINICAL DIAGNOSTIC PROCEDURES**

---

13th Edition (Revised in Aug, 2023)

## **[ PROPERTIES ]**

**Source:** Prokaryotic expression

**Host:** *E.coli*

**Residues:** Ala20~Asp429

**Tags:** N-terminal His Tag

**Subcellular Location:** Membrane, Nucleus, Golgi apparatus

**Purity:** > 80%

**Traits:** Freeze-dried powder

**Buffer formulation:** PBS, pH7.4, containing 0.01% Sarcosyl, 5% Trehalose.

**Original Concentration:** 80µg/mL

**Applications:** Positive Control; Immunogen; SDS-PAGE; WB.

(May be suitable for use in other assays to be determined by the end user.)

**Predicted isoelectric point:** 4.7

**Predicted Molecular Mass:** 49.2kDa

**Accurate Molecular Mass:** 49kDa as determined by SDS-PAGE reducing conditions.

## **[ USAGE ]**

Reconstitute in ddH<sub>2</sub>O to a concentration of 0.1-0.5 mg/mL. Do not vortex.

## **[ STORAGE AND STABILITY ]**

**Storage:** Avoid repeated freeze/thaw cycles.

Store at 2-8°C for one month.

Aliquot and store at -80°C for 12 months.

**Stability Test:** The thermal stability is described by the loss rate. The loss rate was determined by accelerated thermal degradation test, that is, incubate the protein at 37°C for 48h, and no obvious degradation and precipitation were observed. The loss rate is less than 5% within the expiration date under appropriate storage condition.

## **[ SEQUENCE ]**

A IDAPKTCSPK QFACRDQITC ISKGWRCDE  
RDCPDGSDEA PEICPQSKAQ RCQPNEHNCL GTELCVPMSR LCNGVQDCMD  
GSDEGPHCRE LQGNC SRLGC QHHC VPTLDG PTCYCNSSFQ LQADGKTCKD  
FDECSVYGTC SQLCTNTDGS FICGCV EGYL LQPDNR SCKA KNEPVDRPPV  
LLIANSQNIL ATYLSGAQVS TITPTSTRQT TAMDFS YANE TVCWVHVGDS  
AAQTQLKCAR MPGLKGFVDE HTINISLSLH HVEQMAIDWL TGNFYFVDDI  
DDRIFVCNRN GDTCVTLDDL ELYNPKGIAL DPAMGKVFFT DYQGIPKVER  
CDMDGQNRTK LVDSKIVFPH GITLDLVSRL VYWADAYLDY IEVVDYEGKG  
RQTIIQGILI EHLYGLTVFE NYLYATNSD

## [ IDENTIFICATION ]

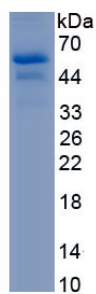


Figure. SDS-PAGE

## [ IMPORTANT NOTE ]

The kit is designed for research use only, we will not be responsible for any issue if the kit was used in clinical diagnostic or any other procedures.