

**RPB010Mu02 100µg**

**Recombinant Low Density Lipoprotein Receptor Related Protein 1 (LRP1)**

**Organism Species: Mus musculus (Mouse)**

***Instruction manual***

FOR IN VITRO USE AND RESEARCH USE ONLY

NOT FOR USE IN CLINICAL DIAGNOSTIC PROCEDURES

9th Edition (Revised in Jul, 2013)

## **[ PROPERTIES ]**

**Residues:** Lys337~Ala426 (Accession # Q91ZX7),  
with two N-terminal Tags, His-tag and GST-tag.

**Host:** *E. coli*

**Subcellular Location:** Cell membrane;  
Single-pass type I membrane protein. Membrane,  
coated pit.

**Purity:** >95%

**Endotoxin Level:** <1.0EU per 1µg  
(determined by the LAL method).

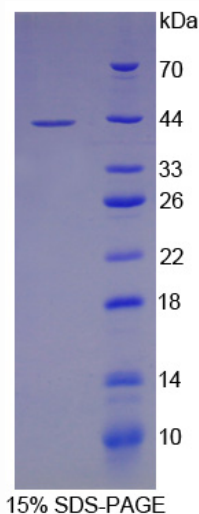
**Formulation:** Supplied as lyophilized form in 20mM Tris,  
500mM NaCl, pH8.0, containing 1mM EDTA, 1mM DTT,  
0.01% sarcosyl, 5% trehalose, and preservative.

**Predicted isoelectric point:** 6.0

**Predicted Molecular Mass:** 42.9kDa

**Applications:** SDS-PAGE; WB; ELISA; IP.

(May be suitable for use in other assays to be determined by the end user.)



## **[ USAGE ]**

Reconstitute in ddH<sub>2</sub>O.

## [ **STORAGE AND STABILITY** ]

**Storage: Avoid repeated freeze/thaw cycles.**

Store at 2-8°C for one month.

Aliquot and store at -80°C for 12 months.

**Stability Test:** The thermal stability is described by the loss rate of the target protein. The loss rate was determined by accelerated thermal degradation test, that is, incubate the protein at 37°C for 48h, and no obvious degradation and precipitation were observed. (Referring from China Biological Products Standard, which was calculated by the Arrhenius equation.) The loss of this protein is less than 5% within the expiration date under appropriate storage condition.

## [ **SEQUENCES** ]

The target protein is fused with two N-terminal Tags, His-tag and GST-tag, its sequence is listed below.

MSPILGYWKI KGLVQPTRL L LEYLEEKYEE HLYERDEGDK WRNKKFELGL EFPNLPYYID  
GDVKLTQSMA IIRYIADKHN MLGGCPKERA EISMLEGAVL DIRYGVSRIA YSKDFETLKV  
DFLSKLPEML KMFEDRLCHK TYLNGDHVTH PDFMLYDALD VVLYMDPMCL DAFPKLVCFK  
KRIEAIQID KYLKSSKYIA WPLQGWQATF GGGDHPPKSD GSTSGSGHHH HHHSAGLVPR  
GSTAIGMKET AAKFERQHM DSPDLGTGGG SGIEGRGSMG YRGSEF-KVFF  
TDYGQIPKVE RCDMDGQNRT KLVDSKIVFP HGITLDLVSRLVYWADAYLD YIEVVDYEGK  
GRQTIIQGIL IEHLYGLTVF ENYLYA

## [ **REFERENCES** ]

1. Smeijers L., *et al.* (2002) Biochim. Biophys. Acta 1577:155-158.
2. Kounnas M.Z., *et al.* (1992) J. Biol. Chem. 267:12420-12423.
3. Morris S.M., Cooper J.A. (2001) Traffic 2:111-123.
4. Herz J., *et al.* (1992) Cell 71:411-421.