

RPA100Mu02 50µg

Recombinant Matrix Metalloproteinase 2 (MMP2)

Organism Species: *Mus musculus* (Mouse)

Instruction manual

FOR RESEARCH USE ONLY

NOT FOR USE IN CLINICAL DIAGNOSTIC PROCEDURES

13th Edition (Revised in Aug, 2023)

[PROPERTIES]

Source: Prokaryotic expression

Host: *E.coli*

Residues: Tyr110~Cys662

Tags: N-terminal His Tag

Subcellular Location: Membrane, Nucleus, Extracellular matrix

Purity: > 97%

Traits: Freeze-dried powder

Buffer formulation: 20mM Tris, 150mM NaCl, pH8.0, containing 0.01% skl, 5%Trehalose.

Original Concentration: 200µg/mL

Applications: Positive Control; Immunogen; SDS-PAGE; WB.

(May be suitable for use in other assays to be determined by the end user.)

Predicted isoelectric point: 5.1

Predicted Molecular Mass: 63.4kDa

Accurate Molecular Mass: 63kDa as determined by SDS-PAGE reducing conditions.

[USAGE]

Reconstitute in ddH₂O to a concentration of 0.1-1.0 mg/mL. Do not vortex.

[STORAGE AND STABILITY]

Storage: Avoid repeated freeze/thaw cycles.

Store at 2-8°C for one month.

Aliquot and store at -80°C for 12 months.

Stability Test: The thermal stability is described by the loss rate. The loss rate was determined by accelerated thermal degradation test, that is, incubate the protein at 37°C for 48h, and no obvious degradation and precipitation were observed. The loss rate is less than 5% within the expiration date under appropriate storage condition.

[SEQUENCE]

```

Y NFFPRKPKWD KNQITYRIIG YTPDLDPETV DDAFARALKV
WSDVTPLRFS RIHDGEADIM INFGRWEHGD GYPFDGKDGL LAHAFAPGTG
VGGDSHFDDD ELWTLGEGQV VRVKYGNADG EYCKFPFLFN GREYSSCTDT
GRSDGFLWCS TTYNFEKDGK YGFCPHEALF TMGGNADGQP CKFPRFQGT
SYNSCTTEGR TDGYRWCSTT EDYDRDKKYG FCPETAMSTV GGNSEGAPCV
FPFTFLGNKY ESCTSAGRND GKVWCATTTN YDDDRKWGFC PDQGYSFLV
AAHEFGHAMG LEHSQDPGAL MAPIYTYTKN FRLSHDDIKG IQELYGPSPD
ADTDGTGPT PTLGPVTPEI CKQDIVFDGI AQIRGEIFFF KDRFIWRTVT
PRDKPTGPLL VATFWPELPE KIDAVYEAPQ EEKAVFFAGN EYWVYSASTL
ERGYPKPLTS LGLPPDVQQV DAAFNWSKNK KTYIFAGDKF WRYNEVKKKM
DPGFPKLIAD SWNAIPDNL AVVDLQGGGH SYFFKGAYYL KLENQSLKSV
KFGSIKDWL GC
  
```

[IDENTIFICATION]

GAATCTACAACTTCTTCCCTCGCAAGCCCAAGTGGGACAAGAACCAAGATCACATACAGGATCATTGGCTACACA CTTGATCTGGACCCAGAGACAGTGGATGATGCCTTTGCTCGCTTCCAAGTCTGGAGCGATGTGACCC

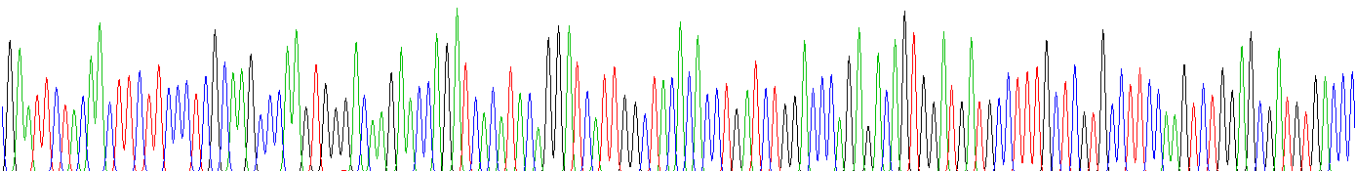


Figure . Gene Sequencing (extract)

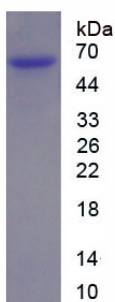


Figure. SDS-PAGE

[IMPORTANT NOTE]

The kit is designed for research use only, we will not be responsible for any issue if the kit was used in clinical diagnostic or any other procedures.