

RPD418Hu01 50µg

Recombinant Myosin Heavy Chain 7, Cardiac Muscle, Beta (MYH7)

Organism Species: *Homo sapiens (Human)*

Instruction manual

FOR RESEARCH USE ONLY

NOT FOR USE IN CLINICAL DIAGNOSTIC PROCEDURES

12th Edition (Revised in Aug, 2016)

[PROPERTIES]

Source: Prokaryotic expression

Host: *E.coli*

Residues: Arg1268~Leu1516

Tags: N-terminal His Tag

Subcellular Location: Plasma

Purity: > 95%

Traits: Freeze-dried powder

Buffer formulation: 20mM Tris, 150mM NaCl, pH8.0, containing 1mM EDTA, 1mM DTT, 0.01% SKL, 5% Trehalose and Proclin300.

Original Concentration: 350µg/mL

Applications: Positive Control; Immunogen; SDS-PAGE; WB.

(May be suitable for use in other assays to be determined by the end user.)

Predicted isoelectric point: 5.3

Predicted Molecular Mass: 30.2kDa

Accurate Molecular Mass: 32kDa as determined by SDS-PAGE reducing conditions.

[USAGE]

Reconstitute in 20mM Tris, 150mM NaCl (pH8.0) to a concentration of 0.1-1.0 mg/mL. Do not vortex.

[STORAGE AND STABILITY]

Storage: Avoid repeated freeze/thaw cycles.

Store at 2-8°C for one month.

Aliquot and store at -80°C for 12 months.

Stability Test: The thermal stability is described by the loss rate. The loss rate was determined by accelerated thermal degradation test, that is, incubate the protein at 37°C for 48h, and no obvious degradation and precipitation were observed. The loss rate is less than 5% within the expiration date under appropriate storage condition.

[SEQUENCE]

```

                RSV NDLTSQRAKL QTENGELSRQ LDEKEALISQ
LTRGKLTYTQ QLEDLKRQLE EEVKAKNALA HALQSARHDC DLLREQYEEE
TEAKAELQRV LSKANSEVAQ WRTKYETDAI QRTEELEEAQ KKLAQRLQEA
EEAVEAVNAK CSSLEKTKHR LQNEIEDLMV DVERSNAAAA ALDKKQRNFD
KILAEWKQKY EESQSELESS QKEARSLSTE LFKLKNAYEE SLEHLETFKR
ENKNLQEEIS DLTEQL
    
```

[IDENTIFICATION]

```

DGTTCCTGTCAGGACCTCACAGGAGGGGCTAAGTTCCAAACCGAGAAATGCTGACCTGTCCCGGCACTGSAATGAAAGGAGGCCTGATCTCCCGCTGACCCGAGGCAAGCTCACCTACACCCAGCACTGAGGACCTCAGGAGGAGCTGAGGAGGAGGTTAAGGCTGAGGAGCCCTGGCCACGCACTGCAGTTGGCC
R S V N D L T S Q R A K L Q T E N G E L S R Q L D E K E A L I S Q L T R G K L T Y T Q Q L E D L K R Q L E E E V K A K N A L A H A L Q S A
    
```

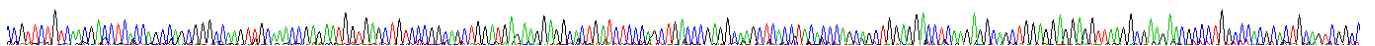
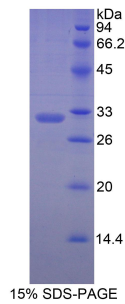


Figure. Gene Sequencing (Extract)



[IMPORTANT NOTE]

The kit is designed for research use only, we will not be responsible for any issue if the kit was used in clinical diagnostic or any other procedures.