

**RPE690Hu01 10µg**

**Recombinant N-Acylethanolamine Acid Amidase (NAAA)**

**Organism Species: *Homo sapiens (Human)***

***Instruction manual***

**FOR RESEARCH USE ONLY**

**NOT FOR USE IN CLINICAL DIAGNOSTIC PROCEDURES**

---

13th Edition (Revised in Aug, 2023)

## **[ PROPERTIES ]**

**Source:** Prokaryotic expression

**Host:** *E.coli*

**Residues:** Asp112~Lys359

**Tags:** N-terminal His Tag

**Subcellular Location:** Lysosome

**Purity:** > 97%

**Traits:** Freeze-dried powder

**Buffer formulation:** 20mM Tris, 150mM NaCl, pH8.0, containing 0.01% Sarcosyl, 5%Trehalose.

**Original Concentration:** 200µg/mL

**Applications:** Positive Control; Immunogen; SDS-PAGE; WB.

(May be suitable for use in other assays to be determined by the end user.)

**Predicted isoelectric point:** 8.5

**Predicted Molecular Mass:** 29.1kDa

**Accurate Molecular Mass:** 28kDa as determined by SDS-PAGE reducing conditions.

## **[ USAGE ]**

Reconstitute in 20mM Tris, 150mM NaCl (pH8.0) to a concentration of 0.1-1.0 mg/mL. Do not vortex.

## **[ STORAGE AND STABILITY ]**

**Storage:** Avoid repeated freeze/thaw cycles.

Store at 2-8°C for one month.

Aliquot and store at -80°C for 12 months.

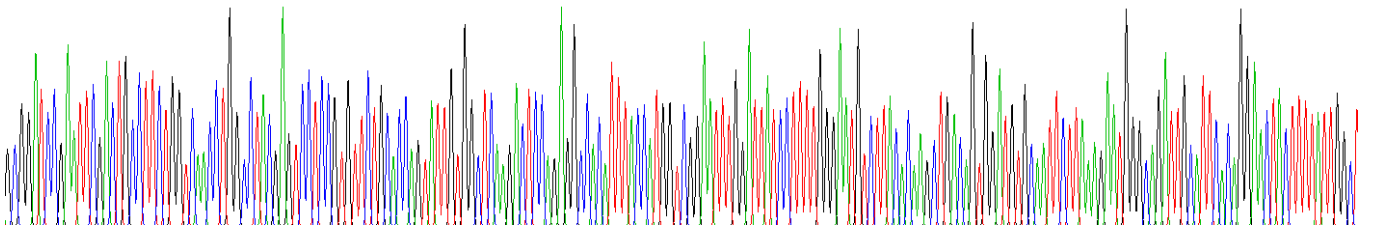
**Stability Test:** The thermal stability is described by the loss rate. The loss rate was determined by accelerated thermal degradation test, that is, incubate the protein at 37°C for 48h, and no obvious degradation and precipitation were observed. The loss rate is less than 5% within the expiration date under appropriate storage condition.

**[ SEQUENCE ]**

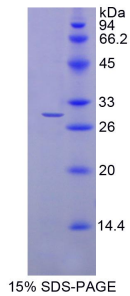
	DCLLVNLAY	ESSVFCTSI	V A QDSRGHIYH	GRNLDYPFGN
VLRKLTVDVQ	FLKNGQIAFT	GTTFIGYVGL	WTGQSPHKFT	VSGDERDKGW
WVENAIAALF	RRHIPVSWLI	RATLSESENF	EAAVGKLAKT	PLIADVYYIV
GGTSPREGVV	ITRNRDGPAD	IWPLDPLNGA	WFRVETNYDH	WKPAPKEDDR
RTSAIKALNA	TGQANLSLEA	LFQILSVVPV	YNNFTIYTTV	MSAGSPDKYM
TRIRNPSRK				

**[ IDENTIFICATION ]**

30GGATTCCGAAATTCGACCTGCGTTCTGGTCAACCTGGGCTTGGAGTCTCTGGTGTCTCTGGACGATTTTGGCTCGAGACTCCAGAGGCGCAATTTACATGGTGGAAATTTGGATTATCTCTTTTGGGAAATGTCTTACCAAGCTGACAGTGGATGTGCAATTCCTTAAAGAAATGGGACAAATTCATTCACAGGAATACCTTTATTGGCT



### Figure . Gene Sequencing (extract)



**[ IMPORTANT NOTE ]**

The kit is designed for research use only, we will not be responsible for any issue if the kit was used in clinical diagnostic or any other procedures.