

**RPA105Si01 50µg**

**Recombinant Nerve Growth Factor (NGF)**

**Organism Species: *Rhesus monkey (Simian)***

***Instruction manual***

**FOR RESEARCH USE ONLY**

**NOT FOR USE IN CLINICAL DIAGNOSTIC PROCEDURES**

---

13th Edition (Revised in Aug, 2023)

## [ **PROPERTIES** ]

**Source:** Prokaryotic expression

**Host:** *E.coli*

**Residues:** Glu19~Arg121+DDDDK+Ser122~Arg239

**Tags:** N-terminal His Tag

**Subcellular Location:** Secreted

**Purity:** > 97%

**Traits:** Freeze-dried powder

**Buffer formulation:** PBS, pH7.4, containing 0.01% Sarcosyl, 5% Trehalose.

**Original Concentration:** 650µg/mL

**Applications:** Positive Control; Immunogen; SDS-PAGE; WB.

(May be suitable for use in other assays to be determined by the end user.)

**Predicted isoelectric point:** 9.8

**Predicted Molecular Mass:** 28.4kDa

**Accurate Molecular Mass:** 28kDa as determined by SDS-PAGE reducing conditions.

## [ **USAGE** ]

Reconstitute in 10mM PBS (pH7.4) to a concentration of 0.1-1.0 mg/mL. Do not vortex.

## [ **STORAGE AND STABILITY** ]

**Storage:** Avoid repeated freeze/thaw cycles.

Store at 2-8°C for one month.

Aliquot and store at -80°C for 12 months.

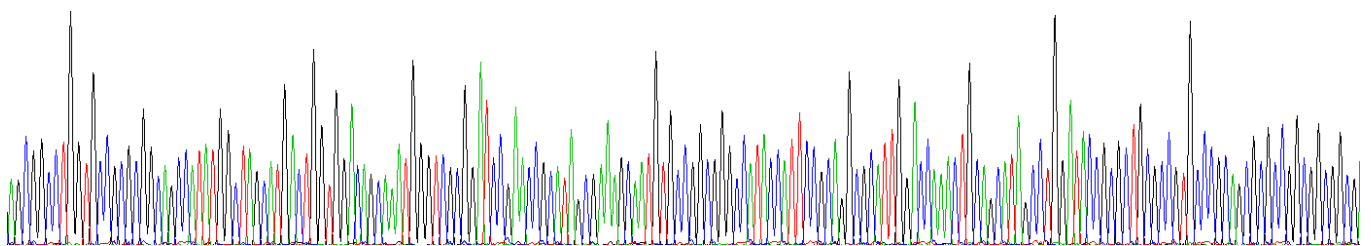
**Stability Test:** The thermal stability is described by the loss rate. The loss rate was determined by accelerated thermal degradation test, that is, incubate the protein at 37°C for 48h, and no obvious degradation and precipitation were observed. The loss rate is less than 5% within the expiration date under appropriate storage condition.

## [ **SEQUENCE** ]

EP HSESNVPAGH TIPQAHWTKL QHSLDTALRR  
 ARSAPAAAIA ARVAGQTRNI TVDPRLFKKR RLRSRVLFS TQPPREAADT  
 QDLDFEVGGA APFNRTHRSK RDDDDKSSSH PIFHRGEFSV CDSVSVWVGD  
 KTTATDIK GK EVMVLGEVNI NNSVFKQYFF ETKCRDPNPV DSGCRGIDSK  
 HWNSYCTTTH TFVKALTM DG KQAAWRFIRI DTACVCVLSR KAVR

## [ IDENTIFICATION ]

AGGGGCTGGTGGCGGGGGGAGCATATGGCTAGCATGACTGGTGACAGCAATGGGTGGCGGATCCGACCGCATAGCGAAAGCAATGTGGCGGGGGCCATACCATTCGCGAGGCGATTGGACAACTGCAGCATAGCCTGGATACCGCGCTGGCGCGTGGCGCGAGCGCGCGGGGGGGG



**Figure . Gene Sequencing (extract)**

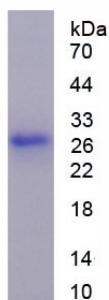


Figure. SDS-PAGE

## [ IMPORTANT NOTE ]

The kit is designed for research use only, we will not be responsible for any issue if the kit was used in clinical diagnostic or any other procedures.