

**RPB317Hu02 200µg**

**Recombinant Perforin 1 (PRF1)**

**Organism Species: *Homo sapiens (Human)***

***Instruction manual***

**FOR RESEARCH USE ONLY**

**NOT FOR USE IN CLINICAL DIAGNOSTIC PROCEDURES**

---

13th Edition (Revised in Aug, 2023)

## [ **PROPERTIES** ]

**Source:** Prokaryotic expression

**Host:** *E.coli*

**Residues:** Pro22~Trp555

**Tags:** N-terminal His Tag

**Subcellular Location:** Membrane, Secreted, Endosome

**Purity:** > 80%

**Traits:** Freeze-dried powder

**Buffer formulation:** 20mM Tris, 150mM NaCl, pH8.0, containing 0.01% skl, 5%Trehalose.

**Original Concentration:** 200µg/mL

**Applications:** Positive Control; Immunogen; SDS-PAGE; WB.

(May be suitable for use in other assays to be determined by the end user.)

**Predicted isoelectric point:** 7.8

**Predicted Molecular Mass:** 62.9kDa

**Accurate Molecular Mass:** 63kDa as determined by SDS-PAGE reducing conditions.

## [ **USAGE** ]

Reconstitute in ddH<sub>2</sub>O to a concentration of 0.1-0.5 mg/mL. Do not vortex.

## [ **STORAGE AND STABILITY** ]

**Storage:** Avoid repeated freeze/thaw cycles.

Store at 2-8°C for one month.

Aliquot and store at -80°C for 12 months.

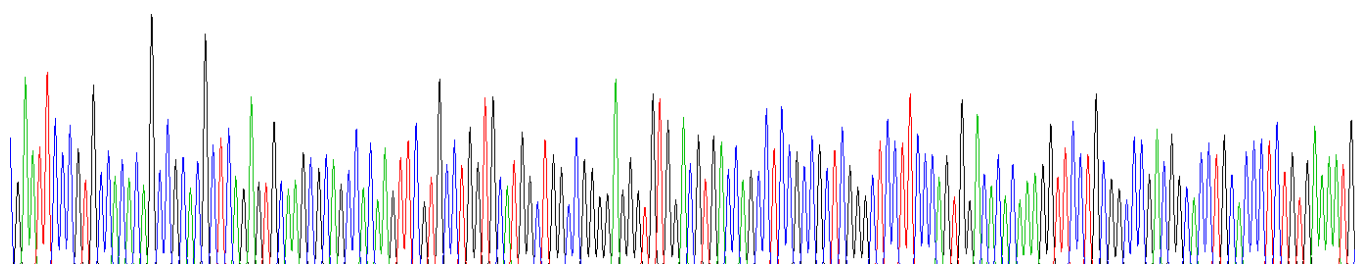
**Stability Test:** The thermal stability is described by the loss rate. The loss rate was determined by accelerated thermal degradation test, that is, incubate the protein at 37°C for 48h, and no obvious degradation and precipitation were observed. The loss rate is less than 5% within the expiration date under appropriate storage condition.

## [ **SEQUENCE** ]

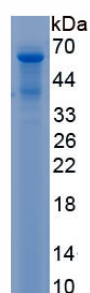
PCHTAARSE CKRSHKFVPG AWLAGEGVDV  
 TSLRRSGSFP VDTQRFLRPD GTCTLCENAL QEGTLQRLPL ALTNWRAQGS  
 GCQRHVTRAK VSSTEAVARD AARSIRNDWK VGLDVTPKPT SNVHVSVAGS  
 HSQAANFAAQ KTHQDQYSFS TDTVECRFYS FHVVHTPPLH PDFKRALGDL  
 PHHFNASTQP AYLRLISNYG THFIRAVELG GRISALTALR TCELALEGLT  
 DNEVEDCLTV EAQVNIGIHG SISAEAKACE EKKKKHKMTA SFHQTYRERH  
 SEVVGGHHTS INDLLFGIQA GPEQYSAWVN SLPGSPGLVD YTLEPLHVLL  
 DSQDPRREAL RRALSQYLTG RARWRDCSRP CPPGRQKSPR DPCQCVCHGS  
 AVTTQDCCPR QRGLAQLEVT FIQAWGLWGD WFTATDAYVK LFFGGQELRT  
 STVWDNNNPI WSVRLDFGDV LLATGGPLRL QVWDQDSGRD DDLLGTCDQA  
 PKSGSHEVRC NLNHGHLKFR YHARCLPHLG GGTCLDYVPQ MLLGEPPGNR  
 SGAVW

## [ IDENTIFICATION ]

GAATTCCGTCGACACAGCGGACGCTCAGAGTCAAGGCGACGACCAAGTTCTGCTGGTGCATGGCTGACGCGGAGGGGTGGGACGTGACCAAGCTCCGCGCTCGGCTCTCTCCAGTGGACACACAAAGGTTCTGCGGCGACGCGACCTGCACCTCTGTGAAATGG



**Figure . Gene Sequencing (extract)**



**Figure. SDS-PAGE**

## [ IMPORTANT NOTE ]

The kit is designed for research use only, we will not be responsible for any issue if the kit was used in clinical diagnostic or any other procedures.