

**RPB317Mu01 100µg**

**Recombinant Perforin 1 (PRF1)**

**Organism Species: *Mus musculus* (Mouse)**

***Instruction manual***

FOR RESEARCH USE ONLY

NOT FOR USE IN CLINICAL DIAGNOSTIC PROCEDURES

---

13th Edition (Revised in Aug, 2023)

**[ PROPERTIES ]**

**Source:** Prokaryotic expression

**Host:** *E.coli*

**Residues:** Val40~Lys355

**Tags:** N-terminal His and GST Tag

**Subcellular Location:** Membrane, Secreted, Cytoplasm, Endosome

**Purity:** > 90%

**Traits:** Freeze-dried powder

**Buffer formulation:** PBS, pH7.4, containing 0.01% SKL, 5% Trehalose .

**Original Concentration:** 200µg/mL

**Applications:** Positive Control; Immunogen; SDS-PAGE; WB.

(May be suitable for use in other assays to be determined by the end user.)

**Predicted isoelectric point:** 7.4

**Predicted Molecular Mass:** 65.3kDa

**Accurate Molecular Mass:** 65kDa as determined by SDS-PAGE reducing conditions.

**[ USAGE ]**

Reconstitute in 10mM PBS (pH7.4) to a concentration of 0.1-1.0 mg/mL. Do not vortex.

**[ STORAGE AND STABILITY ]**

**Storage:** Avoid repeated freeze/thaw cycles.

Store at 2-8°C for one month.

Aliquot and store at -80°C for 12 months.

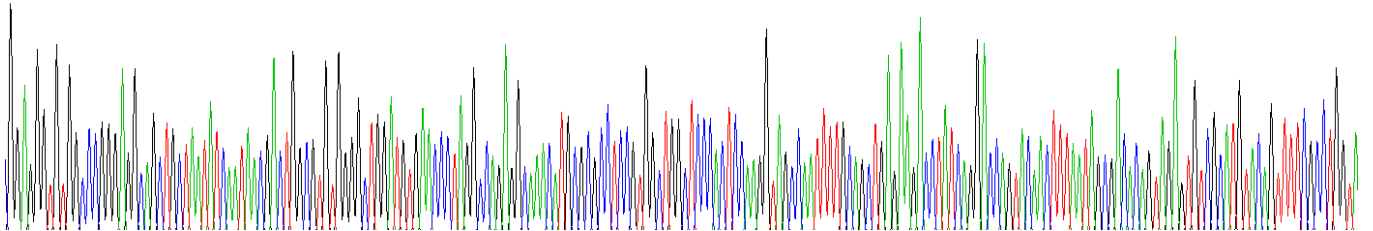
**Stability Test:** The thermal stability is described by the loss rate. The loss rate was determined by accelerated thermal degradation test, that is, incubate the protein at 37°C for 48h, and no obvious degradation and precipitation were observed. The loss rate is less than 5% within the expiration date under appropriate storage condition.

**[ SEQUENCE ]**

V WMAGEGMDVT  
 TLRRSGSFPV NTQRFLRPDR TCTLCKNSLM RDATQRLPVA ITHWRPHSSH  
 CQRNVAAAKV HSTEGVAREA AANINNDWRV GLDVNPRPEA NMRASVAGSH  
 SKVANFAAEK TYQDQYNFNS DTVECRMYSF RLVQKPPLHL DFKKALRALP  
 RNFNSSTEHA YHRLISSYGT HFITAVDLGG RISVLTALRT CQLTLNGLTA  
 DEVGDCLNVE AQVSIGAQAS VSSEYKACEE KKKQHKMATS FHQTYRERHV  
 EVLGGPLDST HDLLFGNQAT PEQFSTWTAS LPSNPGLVDY SLEPLHTLLE  
 EQNPK

**[ IDENTIFICATION ]**

YGGAGGCTGTGCGCCCGGAGGCAGCTCTCAATATCAATTAAGACTGCGCTGTGCGGCTGGATGTGAACCTAGGCGGAGGCAGCATGCGCGCCCTGGCTGGCTCCCACTCCAGGTAGCCAACTTTTGAGCTGAGAGAGCTTACAGGACAGTCAACTTTAATAGCGACACAGTAGAGTGTCCATGTACAGTTTTGCGCTGGTA



**Figure . Gene Sequencing (extract)**

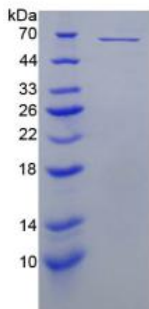


Figure. SDS-PAGE

**[ IMPORTANT NOTE ]**

The kit is designed for research use only, we will not be responsible for any issue if the kit was used in clinical diagnostic or any other procedures.