

RPA867Hu01 50µg

Recombinant Phospholipase A2, Lipoprotein Associated (LpPLA2)

Organism Species: *Homo sapiens (Human)*

Instruction manual

FOR RESEARCH USE ONLY

NOT FOR USE IN CLINICAL DIAGNOSTIC PROCEDURES

12th Edition (Revised in Aug, 2016)

[**PROPERTIES**]

Source: Prokaryotic expression

Host: *E.coli*

Residues: Phe22~Asn441

Tags: N-terminal His Tag

Subcellular Location: Extracellular matrix

Purity: > 95%

Traits: Freeze-dried powder

Buffer formulation: PBS, pH7.4, containing 0.01% SKL.

Original Concentration: 200µg/mL

Applications: Positive Control; Immunogen; SDS-PAGE; WB.

(May be suitable for use in other assays to be determined by the end user.)

Predicted isoelectric point: 7.1

Predicted Molecular Mass: 50.0kDa

Accurate Molecular Mass: 50kDa as determined by SDS-PAGE reducing conditions.

[**USAGE**]

Reconstitute in 10mM PBS (pH7.4) to a concentration of 0.1-1.0 mg/mL. Do not vortex.

[**STORAGE AND STABILITY**]

Storage: Avoid repeated freeze/thaw cycles.

Store at 2-8°C for one month.

Aliquot and store at -80°C for 12 months.

Stability Test: The thermal stability is described by the loss rate. The loss rate was determined by accelerated thermal degradation test, that is, incubate the protein at 37°C for 48h, and no obvious degradation and precipitation were observed. The loss rate is less than 5% within the expiration date under appropriate storage condition.

[**SEQUENCE**]

```

          FDWQYINPV AHMKSSAWVN KIQVLMAAAS
FGQTKIPRGN GPYSVGCTDL MFDHTNKGTF LRLYYPSQDN DRLDTLWIPN
KEYFWGLSKF LGTHWLMGNI LRLLFSGMTT PANWNSPLRP GEKYPLVVFS
HGLGAFRTLY SAIGIDLASH GFIVAAVEHR DRSASATYYF KDQSAAEIGD
KSWLYLRTLK QEEETHIRNE QVRQRAKECS QALSLILDID HGKPVKNALD
LKFDMEQLKD SIDREKIAVI GHSFGGATVI QTLSEDQRFR CGIALDAWMF
PLGDEVYSRI PQPLFFINSE YFQYPANIIK MKKCYSPPDE RKMITIRGSV
HQNFAFTFA TGKIIGHMLK LKGDIDSNA IDLSNKASLA FLQKHLGLHK
DFDQWDCLIE GDDENLIPGT NINTTNQHIM LQNSSGIEKY N
    
```

[IDENTIFICATION]

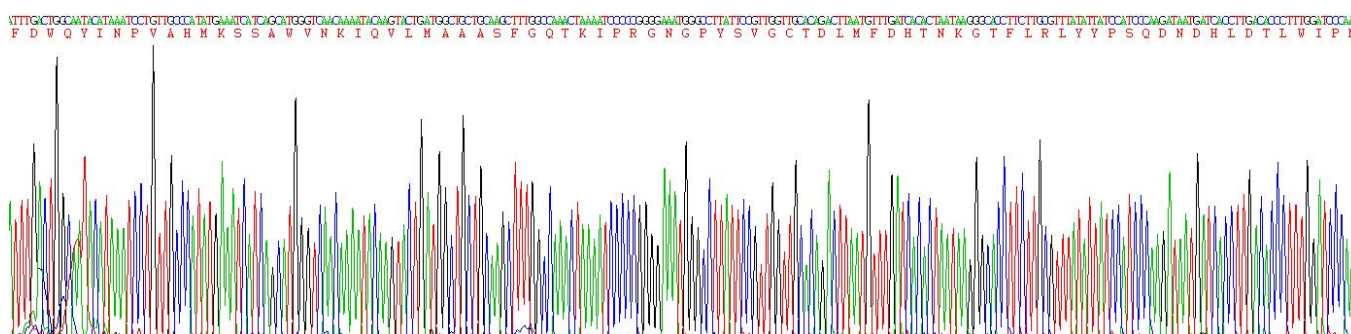
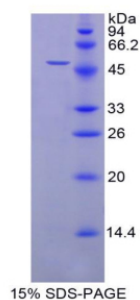


Figure. Gene Sequencing (Extract)



[IMPORTANT NOTE]

The kit is designed for research use only, we will not be responsible for any issue if the kit was used in clinical diagnostic or any other procedures.