

RPB972Hu01 200ug

Recombinant Pigment Epithelium Derived Factor (PEDF)

Organism Species: *Homo sapiens (Human)*

Instruction manual

FOR RESEARCH USE ONLY

NOT FOR USE IN CLINICAL DIAGNOSTIC PROCEDURES

12th Edition (Revised in Aug, 2016)

[PROPERTIES]

Source: Prokaryotic expression

Host: *E.coli*

Residues: Asn21~Pro415

Tags: N-terminal His Tag

Subcellular Location: Secreted

Purity: > 95%

Traits: Freeze-dried powder

Buffer formulation: PBS, pH7.4, containing 0.01% SKL, 5% Trehalose.

Original Concentration: 1200µg/mL

Applications: Positive Control; Immunogen; SDS-PAGE; WB.

(May be suitable for use in other assays to be determined by the end user.)

Predicted isoelectric point: 6.3

Predicted Molecular Mass: 47.8kDa

Accurate Molecular Mass: 48kDa as determined by SDS-PAGE reducing conditions.

[USAGE]

Reconstitute in 10mM PBS (pH7.4) to a concentration of 0.1-1.0 mg/mL. Do not vortex.

[STORAGE AND STABILITY]

Storage: Avoid repeated freeze/thaw cycles.

Store at 2-8°C for one month.

Aliquot and store at -80°C for 12 months.

Stability Test: The thermal stability is described by the loss rate. The loss rate was determined by accelerated thermal degradation test, that is, incubate the protein at 37°C for 48h, and no obvious degradation and precipitation were observed. The loss rate is less than 5% within the expiration date under appropriate storage condition.

[SEQUENCE]

```

                NPASPPEEGS PDPDSTGALV EEEDPFFKVP
VNKLAAAVSN FGYDLYRVRS STSPTTNVLL SPLSVATALS ALSLGAEQRT
ESIIHRALYY DLISSPDIHG TYKELLDTVT APQKNLKSAS RIVFEKKLRI
KSSFVAPLEK SYGTRPRVLT GNPRLDLQEI NNWVQAQMKG KLARSTKEIP
DEISILLLVG AHFKGQWVK FDSRKTSLD FYLDEERTVR VPMMSDPKAV
LRYGLSDLS CKIAQLPLTG SMSIIFFLPL KVTQNLTLIE ESLTSEFIHD
IDRELKTVQA VLTVPKLLS YEGEVTKSLQ EMKLQSLFDS PDFSKITGKP
IKLTQVEHRA GFEWNEDGAG TTPSPGLQPA HLTFPDYHL NQPFIFVLRD
TDTGALLFIG KILDLP
    
```

[IDENTIFICATION]

CGATTACCCCTGCTCCCTTCGGAGAGCTTCCGACCCGACGACGAGGACCTGGTGGGGGGGGGATCTTCTTAAAGTCCGCGAGAGCTTCCGAGCCCTGCTCCACTTCCGATGCTGCTGCTGGGCTGATCGCATCGATGCTCCGACCAAGTCTCTCTGCTCTCTGCTGCTGCTCCCTCTCCCTCTCTGCTGGAGTGGAGCGAGGAT

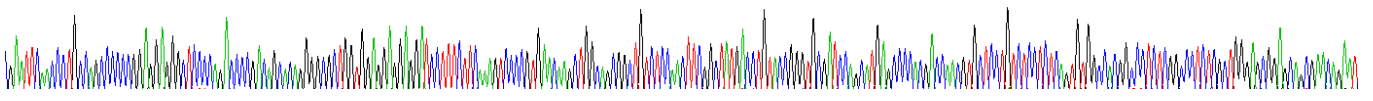
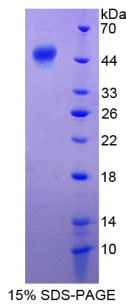


Figure . Gene Sequencing (extract)



[IMPORTANT NOTE]

The kit is designed for research use only, we will not be responsible for any issue if the kit was used in clinical diagnostic or any other procedures.