

**RPC919Ra01 100µg**

**Recombinant Platelet Derived Growth Factor D (PDGFD)**

**Organism Species: *Rattus norvegicus* (Rat)**

***Instruction manual***

**FOR RESEARCH USE ONLY**

**NOT FOR USE IN CLINICAL DIAGNOSTIC PROCEDURES**

---

13th Edition (Revised in Aug, 2023)

## **[ PROPERTIES ]**

**Source:** Prokaryotic expression

**Host:** *E.coli*

**Residues:** Thr24~Arg370

**Tags:** N-terminal His Tag

**Subcellular Location:** Secreted

**Purity:** > 80%

**Traits:** Freeze-dried powder

**Buffer formulation:** PBS, pH7.4, containing 0.01% Sarcosyl, 5% Trehalose.

**Original Concentration:** 600µg/mL

**Applications:** Positive Control; Immunogen; SDS-PAGE; WB.

(May be suitable for use in other assays to be determined by the end user.)

**Predicted isoelectric point:** 7.9

**Predicted Molecular Mass:** 43.8kDa

**Accurate Molecular Mass:** 44kDa as determined by SDS-PAGE reducing conditions.

## **[ USAGE ]**

Reconstitute in 10mM PBS (pH7.4) to a concentration of 0.1-1.0 mg/mL. Do not vortex.

## **[ STORAGE AND STABILITY ]**

**Storage:** Avoid repeated freeze/thaw cycles.

Store at 2-8°C for one month.

Aliquot and store at -80°C for 12 months.

**Stability Test:** The thermal stability is described by the loss rate. The loss rate was determined by accelerated thermal degradation test, that is, incubate the protein at 37°C for 48h, and no obvious degradation and precipitation were observed. The loss rate is less than 5% within the expiration date under appropriate storage condition.

## **[ SEQUENCE ]**

```
TPQSASIKAL RNANLRRDES NHLTDLYRRD ENIRVTGTGH VQSPRFPNSY PRNLLLTWRL
HSQEKTRIQL AFDHQFGLLE AENDICRYDF VEVEDVSESS TVVRGRWCGH KEIPPRITSR
TNQIKITFQS DDYFVAKPGF KIYYSFVEDF QPEAASEINW ESVTSSFSGV SYHSPSVMDS
TLTADALDKA IAEFDTVEDL LKYFNPASWQ DDLENLYMDT PRYRGRSYHE RSKKVDLDRL
NDDVKRYSCT PRNHSVNLRE ELKLTNAVFF PRCLLVQRCG GNCGCGTLNW KSCTCSSGKT
VKKYHEVLKF EPGHFKRRGK AKNMALVDIQ LDHHERCDIC CSSRPPR
```

## [ IDENTIFICATION ]

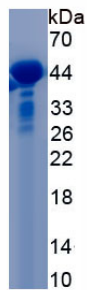


Figure. SDS-PAGE

## [ IMPORTANT NOTE ]

The kit is designed for research use only, we will not be responsible for any issue if the kit was used in clinical diagnostic or any other procedures.