

RPB253Hu01 200µg

Recombinant Prolylcarboxypeptidase (PRCP)

Organism Species: *Homo sapiens (Human)*

Instruction manual

FOR RESEARCH USE ONLY

NOT FOR USE IN CLINICAL DIAGNOSTIC PROCEDURES

13th Edition (Revised in Aug, 2023)

[PROPERTIES]

Source: Prokaryotic expression

Host: *E.coli*

Residues: Asp108~Val376

Tags: N-terminal His Tag

Subcellular Location: Lysosome

Purity: > 95%

Traits: Freeze-dried powder

Buffer formulation: 20mM Tris, 150mM NaCl, pH8.0, containing 0.01% skl, 5%Trehalose.

Original Concentration: 80µg/mL

Applications: Positive Control; Immunogen; SDS-PAGE; WB.

(May be suitable for use in other assays to be determined by the end user.)

Predicted isoelectric point: 6.4

Predicted Molecular Mass: 33.7kDa

Accurate Molecular Mass: 34kDa as determined by SDS-PAGE reducing conditions.

[USAGE]

Reconstitute in ddH₂O to a concentration less than or equal to 0.1mg/mL. Do not vortex.

[STORAGE AND STABILITY]

Storage: Avoid repeated freeze/thaw cycles.

Store at 2-8°C for one month.

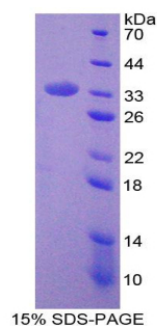
Aliquot and store at -80°C for 12 months.

Stability Test: The thermal stability is described by the loss rate. The loss rate was determined by accelerated thermal degradation test, that is, incubate the protein at 37°C for 48h, and no obvious degradation and precipitation were observed. The loss rate is less than 5% within the expiration date under appropriate storage condition.

[SEQUENCE]

| | | | | |
|------------|-------------|------------|------------|-------------|
| DVA | EELKAMLVFA | EHRYYGESLP | FGDNSFKDSR | HLNFLTSEQA |
| LADFAELIKH | LKRTIPGAEN | QPVIAIGGSY | GGMLAANFRM | KYPHMMVVGAL |
| AASAPIWQFE | DLVPCGVFMK | IVTTDFRKSG | PHCSESIHRS | WDAINRLSNT |
| GSGLQWLTGA | LHLCSP LTSQ | DIQHLKDWIS | ETWVNLAMVD | YPYASNFLQP |
| LPANPIKVVC | QYLKNPNVSD | SLLLQNIFQA | LNYYNYSGQ | VKCLNISETA |
| TSSLGTLGWS | YQACTEVVMP | FCTNGV | | |

[IDENTIFICATION]



[IMPORTANT NOTE]

The kit is designed for research use only, we will not be responsible for any issue if the kit was used in clinical diagnostic or any other procedures.