

RPB434Mu01 200µg

Recombinant Proteinase 3 (PR3)

Organism Species: *Mus musculus* (Mouse)

Instruction manual

FOR RESEARCH USE ONLY

NOT FOR USE IN CLINICAL DIAGNOSTIC PROCEDURES

13th Edition (Revised in Aug, 2023)

[PROPERTIES]

Source: Prokaryotic expression

Host: *E.coli*

Residues: Ala24~Leu249

Tags: N-terminal His Tag

Subcellular Location: Membrane, Secreted, Lysosome

Purity: > 90%

Traits: Freeze-dried powder

Buffer formulation: 20mM Tris, 150mM NaCl, pH8.0, containing 0.01% skl, 5%Trehalose.

Original Concentration: 1200µg/mL

Applications: Positive Control; Immunogen; SDS-PAGE; WB.

(May be suitable for use in other assays to be determined by the end user.)

Predicted isoelectric point: 6.5

Predicted Molecular Mass: 26.0kDa

Accurate Molecular Mass: 27kDa as determined by SDS-PAGE reducing conditions.

[USAGE]

Reconstitute in 20mM Tris, 150mM NaCl (pH8.0) to a concentration of 0.1-1.0 mg/mL. Do not vortex.

[STORAGE AND STABILITY]

Storage: Avoid repeated freeze/thaw cycles.

Store at 2-8°C for one month.

Aliquot and store at -80°C for 12 months.

Stability Test: The thermal stability is described by the loss rate. The loss rate was determined by accelerated thermal degradation test, that is, incubate the protein at 37°C for 48h, and no obvious degradation and precipitation were observed. The loss rate is less than 5% within the expiration date under appropriate storage condition.

[SEQUENCE]

AVQASKI VGGHEARPHS RPYVASLQLS
 RFPGSHFCGG TLIHPRFVLT AAHCLQDISW QLVTVVLGAH DLLSSEPEQQ
 KFTISQVFQN NYNPEENLND VLLLQLNRTA SLGKEVAVAS LPQQDQTL SQ
 GTQCLAMGWG RLGTQAPTPR VLQELNVTVV TFLCREHNVC TLVPRRAAGI
 CFGDSSGGLI CNGILHGVDV FVIRECASLQ FPDDFFARVSM YVDWIQNVL

[IDENTIFICATION]

CGA C TT C C C T T A G A A T A T T T T G T T T A C T T T A G A A G G A G A T A C A T G G G C A T C A T C A T C A T A G C G G A T C C G A A T T C G C A G T C C A G G C C T C C A A G A T T G T A G G T G G C A G A G G C T G G C C C A C T C T G G C C T T A T G C G C A T C C C T G C A G C T A G C A G G T T C C C T G G G A G C C

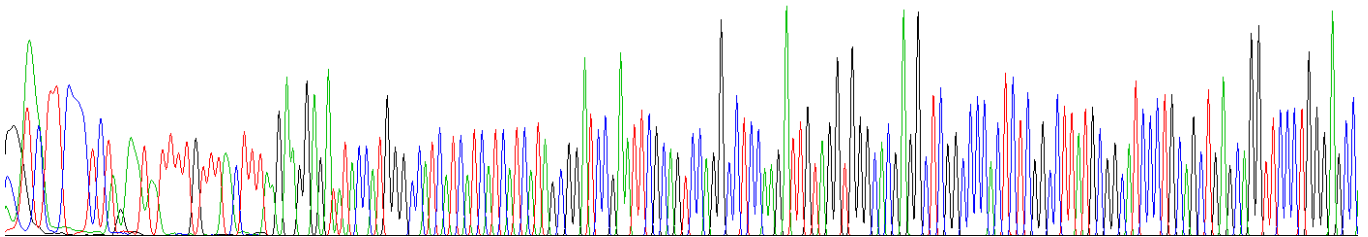


Figure. Gene Sequencing (Extract)

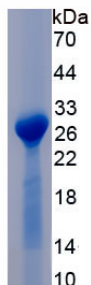


Figure. SDS-PAGE

[IMPORTANT NOTE]

The kit is designed for research use only, we will not be responsible for any issue if the kit was used in clinical diagnostic or any other procedures.