

RPB923Hu01 200µg

Recombinant Pyruvate Dehydrogenase Beta (PDHb)

Organism Species: *Homo sapiens (Human)*

Instruction manual

FOR RESEARCH USE ONLY

NOT FOR USE IN CLINICAL DIAGNOSTIC PROCEDURES

13th Edition (Revised in Aug, 2023)

[PROPERTIES]

Source: Prokaryotic expression

Host: *E.coli*

Residues: Leu31~Asn341

Tags: N-terminal His Tag

Subcellular Location: Mitochondrion

Purity: > 95%

Traits: Freeze-dried powder

Buffer formulation: PBS, pH7.4, containing 0.01% SKL, 5% Trehalose.

Original Concentration: 200µg/mL

Applications: Positive Control; Immunogen; SDS-PAGE; WB.

(May be suitable for use in other assays to be determined by the end user.)

Predicted isoelectric point: 5.6

Predicted Molecular Mass: 35.1kDa

Accurate Molecular Mass: 35kDa as determined by SDS-PAGE reducing conditions.

[USAGE]

Reconstitute in 10mM PBS (pH7.4) to a concentration of 0.1-1.0 mg/mL. Do not vortex.

[STORAGE AND STABILITY]

Storage: Avoid repeated freeze/thaw cycles.

Store at 2-8°C for one month.

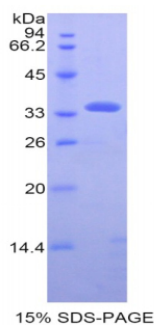
Aliquot and store at -80°C for 12 months.

Stability Test: The thermal stability is described by the loss rate. The loss rate was determined by accelerated thermal degradation test, that is, incubate the protein at 37°C for 48h, and no obvious degradation and precipitation were observed. The loss rate is less than 5% within the expiration date under appropriate storage condition.

[SEQUENCE]

LQVTVRDAIN QGMDEELERD
 EKVFLLGEEV AQYDGAYKVS RGLWKKYGDK RIIDTPISEM GFAGIAVGAA
 MAGLRPICEF MTFNFSMQAI DQVINSAAKT YYMSGGLQPV PIVFRGPNGA
 SAGVAAQHSQ CFAAWYGHCP GLKVVSPWNS EDAKGLIKSA IRDNNPVVVL
 ENELMYGVPF EFPPEAQSKD FLIPIGKAKI ERQGTHITVV SHSRPVGHCL
 EAAAVLSKEG VECEVINMRT IRPMDMETIE ASVMKTNHLV TVEGGWPQFG
 VGAEICARIM EGPAFNFLDA PAVRVTGADV PMPYAKILED N

[IDENTIFICATION]



[IMPORTANT NOTE]

The kit is designed for research use only, we will not be responsible for any issue if the kit was used in clinical diagnostic or any other procedures.