

RPA855Mu02 10µg

Recombinant Receptor Activator Of Nuclear Factor Kappa B Ligand (RANKL)

Organism Species: *Mus musculus* (Mouse)

Instruction manual

FOR RESEARCH USE ONLY

NOT FOR USE IN CLINICAL DIAGNOSTIC PROCEDURES

13th Edition (Revised in Aug, 2023)

[PROPERTIES]

Source: Prokaryotic expression

Host: *E.coli*

Residues: Ala73~Ile315

Tags: N-terminal His Tag

Subcellular Location: Membrane, Secreted, Cytoplasm

Purity: > 90%

Traits: Freeze-dried powder

Buffer formulation: 20mM Tris, 150mM NaCl, pH8.0, containing 0.01% skl, 5%Trehalose.

Original Concentration: 200µg/mL

Applications: Positive Control; Immunogen; SDS-PAGE; WB.

(May be suitable for use in other assays to be determined by the end user.)

Predicted isoelectric point: 7.1

Predicted Molecular Mass: 33.6kDa

Accurate Molecular Mass: 33kDa as determined by SDS-PAGE reducing conditions.

[USAGE]

Reconstitute in ddH₂O to a concentration of 0.1-1.0 mg/mL. Do not vortex.

[STORAGE AND STABILITY]

Storage: Avoid repeated freeze/thaw cycles.

Store at 2-8°C for one month.

Aliquot and store at -80°C for 12 months.

Stability Test: The thermal stability is described by the loss rate. The loss rate was determined by accelerated thermal degradation test, that is, incubate the protein at 37°C for 48h, and no obvious degradation and precipitation were observed. The loss rate is less than 5% within the expiration date under appropriate storage condition.

[SEQUENCE]

AQMDPNRI SEDSTHCFYR ILRLHENADL
 QDSTLESED L P D S C R R M K Q A F Q G A V Q K E L Q H I V G P Q R F S G A P A M M E G S W
 L D V A Q R G K P E A Q P F A H L T I N A A S I P S G S H K V T L S S W Y H D R G W A K I S N M T L
 S N G K L R V N Q D G F Y Y L Y A N I C F R H H E T S G S V P T D Y L Q L M V Y V V K T S I K I P S
 S H N L M K G G S T K N W S G N S E F H F Y S I N V G G F F K L R A G E E I S I Q V S N P S L L D P
 D Q D A T Y F G A F K V Q D I

[IDENTIFICATION]

ATGCTTCCGGGAGGGTCTAGCGAATTCAGGAGCGCTCTCTCTTTTATGATCTGGCTCTAGAAACCGGTTTGGGGCTGGCTCTGGGGTGGAGCGCTCTCTGGCTCTGGGGTGGAGCGCTTTGAGGGGCGTGGAGGCTTGGAGCATGTGGGGCTGGAGGCTCTGGCTCTGGCTCTGGAGGCTCTGGCTCTGGT

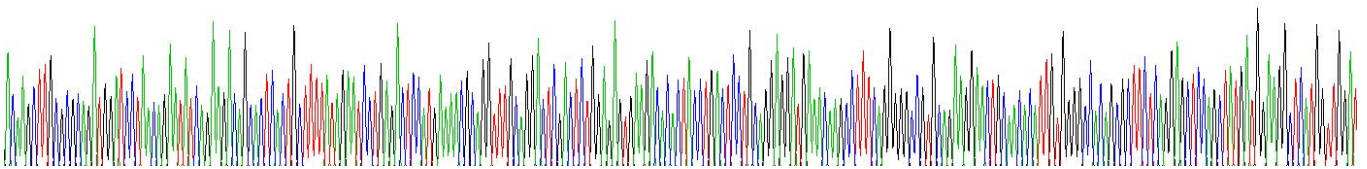


Figure . Gene Sequencing (extract)

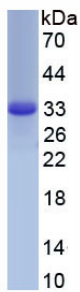


Figure. SDS-PAGE

[IMPORTANT NOTE]

The kit is designed for research use only, we will not be responsible for any issue if the kit was used in clinical diagnostic or any other procedures.