

RPC775Ra01 100µg

Recombinant Reelin (RL)

Organism Species: *Rattus norvegicus* (Rat)

Instruction manual

FOR RESEARCH USE ONLY

NOT FOR USE IN CLINICAL DIAGNOSTIC PROCEDURES

12th Edition (Revised in Aug, 2016)

[PROPERTIES]

Source: Prokaryotic expression

Host: *E.coli*

Residues: Glu2400~Leu2610

Tags: N-terminal His Tag

Subcellular Location: Secreted, Extracellular matrix

Purity: > 97%

Traits: Freeze-dried powder

Buffer formulation: 20mM Tris, 150mM NaCl, pH8.0, containing 0.01% SKL, 5% Trehalose.

Original Concentration: 200µg/mL

Applications: Positive Control; Immunogen; SDS-PAGE; WB.

(May be suitable for use in other assays to be determined by the end user.)

Predicted isoelectric point: 5.8

Predicted Molecular Mass: 30.3kDa

Accurate Molecular Mass: 33kDa as determined by SDS-PAGE reducing conditions.

[USAGE]

Reconstitute in 20mM Tris, 150mM NaCl (pH8.0) to a concentration of 0.1-1.0 mg/mL. Do not vortex.

[STORAGE AND STABILITY]

Storage: Avoid repeated freeze/thaw cycles.

Store at 2-8°C for one month.

Aliquot and store at -80°C for 12 months.

Stability Test: The thermal stability is described by the loss rate. The loss rate was determined by accelerated thermal degradation test, that is, incubate the protein at 37°C for 48h, and no obvious degradation and precipitation were observed. The loss rate is less than 5% within the expiration date under appropriate storage condition.

[SEQUENCE]

Y S V D L G L S W H P L V R D C L P T N V E C S R Y H L Q R I L V S D T F N K W T R I T L P L P A Y E
T R S Q A T R F R W H Q P A P F D K Q Q T W A I D N V Y I G D G C L D M C S G H G R C I Q G S C V C
D E Q W G G L Y C D E P E T S L P T Q L K D N F N R A P S N Q N W L T V N G G K L S T V C G A V A S
G L A L H F S G G C S R L L V T V D L N L T N A E F I Q F Y F M Y G C L I T P S N R N Q G V L L E Y
S V N G G I T W T L

[IDENTIFICATION]

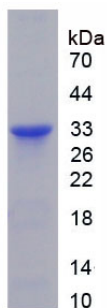


Figure. SDS-PAGE

[IMPORTANT NOTE]

The kit is designed for research use only, we will not be responsible for any issue if the kit was used in clinical diagnostic or any other procedures.