

RPB444Hu03 10µg

Recombinant Ribonuclease Inhibitor (RI)

Organism Species: *Homo sapiens* (Human)

Instruction manual

FOR RESEARCH USE ONLY

NOT FOR USE IN CLINICAL DIAGNOSTIC PROCEDURES

13th Edition (Revised in Aug, 2023)

[PROPERTIES]

Source: Prokaryotic expression

Host: *E.coli*

Residues: Ser2~Ser461

Tags: N-terminal His Tag

Subcellular Location: Plasma

Purity: > 90%

Traits: Freeze-dried powder

Buffer formulation: 20mM Tris, 150mM NaCl, pH8.0, containing 0.01% Sarcosyl, 5%Trehalose.

Original Concentration: 150µg/mL

Applications: Positive Control; Immunogen; SDS-PAGE; WB.

(May be suitable for use in other assays to be determined by the end user.)

Predicted isoelectric point: 4.4

Predicted Molecular Mass: 53.5kDa

Accurate Molecular Mass: 53kDa as determined by SDS-PAGE reducing conditions.

[USAGE]

Reconstitute in 20mM Tris, 150mM NaCl (pH8.0) to a concentration of 0.1-1.0 mg/mL. Do not vortex.

[STORAGE AND STABILITY]

Storage: Avoid repeated freeze/thaw cycles.

Store at 2-8°C for one month.

Aliquot and store at -80°C for 12 months.

Stability Test: The thermal stability is described by the loss rate. The loss rate was determined by accelerated thermal degradation test, that is, incubate the protein at 37°C for 48h, and no obvious degradation and precipitation were observed. The loss rate is less than 5% within the expiration date under appropriate storage condition.

[SEQUENCE]

```
SLDIQSLDI QCEELSDARW AELLPLLQQC QVRLDDCGL TEARCKDISS
ALRVNPALAE LNLRSNELGD VGVHCVLQGL QTPSCKIQKL SLQNCCLTGA
GCGVLSSTLR TLPTLQELHL SDNLLGDAGL QLLCEGLLDP QCRLEKLQLE
YCSLSAASCE PLASVLRAKP DFKELTVSNN DINEAGVRVL CQGLKDSPCQ
LEALKLESCG VTSDNCRDLC GIVASKASLR ELALGSNKLK DVGMAELCPG
LLHPSSRLRT LWIWEKGITA KCGDLRCRVL RAKESLKELS LAGNELGDEG
ARLLCETLLE PGCQLESLWV KSCSFTAACC SHFSSVLAQN RFLLELQISN
NRLEDAGVRE LCQGLGQPGS VLRVLWLADC DVSDSSCSSL AATLLANHSL
RELDLSNNCL GDAGILQLVE SVRQPGCLLE QLVLYDIYWS EEMEDRLQAL
EKDKPSLRVI S
```

[IDENTIFICATION]

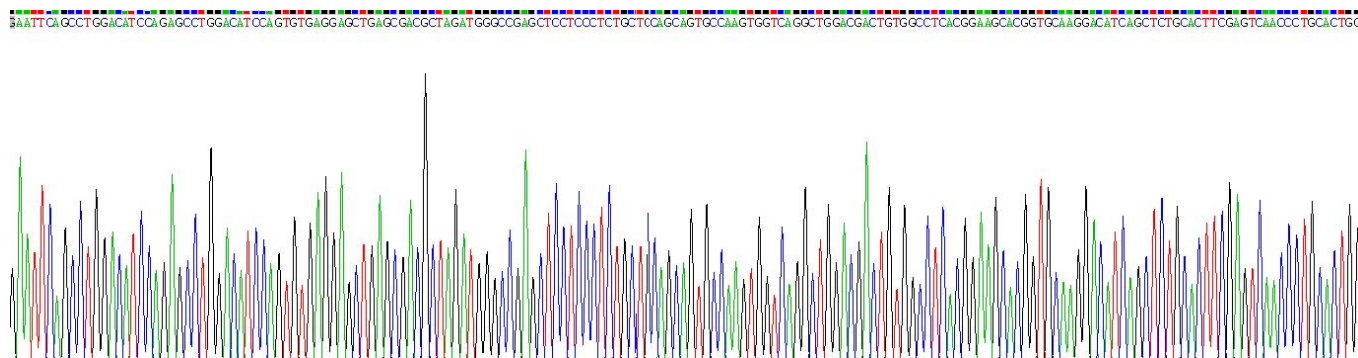
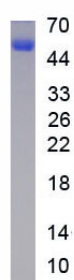


Figure . Gene Sequencing (extract)



[IMPORTANT NOTE]

The kit is designed for research use only, we will not be responsible for any issue if the kit was used in clinical diagnostic or any other procedures.