

RPB372Hu02 50µg

Recombinant Serpin B3 (SERPINB3)

Organism Species: *Homo sapiens (Human)*

Instruction manual

FOR RESEARCH USE ONLY

NOT FOR USE IN CLINICAL DIAGNOSTIC PROCEDURES

13th Edition (Revised in Aug, 2023)

[PROPERTIES]

Source: Prokaryotic expression

Host: *E.coli*

Residues: Asn2~Pro390

Tags: N-terminal His Tag

Subcellular Location: Secreted

Purity: > 97%

Traits: Freeze-dried powder

Buffer formulation: PBS, pH7.4, containing 0.01% SKL, 5% Trehalose .

Original Concentration: 250µg/mL

Applications: Positive Control; Immunogen; SDS-PAGE; WB.

(May be suitable for use in other assays to be determined by the end user.)

Predicted isoelectric point: 6.1

Predicted Molecular Mass: 48.1kDa

Accurate Molecular Mass: 48kDa as determined by SDS-PAGE reducing conditions.

[USAGE]

Reconstitute in 10mM PBS (pH7.4) to a concentration of 0.1-1.0 mg/mL. Do not vortex.

[STORAGE AND STABILITY]

Storage: Avoid repeated freeze/thaw cycles.

Store at 2-8°C for one month.

Aliquot and store at -80°C for 12 months.

Stability Test: The thermal stability is described by the loss rate. The loss rate was determined by accelerated thermal degradation test, that is, incubate the protein at 37°C for 48h, and no obvious degradation and precipitation were observed. The loss rate is less than 5% within the expiration date under appropriate storage condition.

[SEQUENCE]

NSLSEANTK FMPDLFQQFR KSKENNIFYS PISITSALGM VLLGAKDNTA
QQISKVLHFD QVTENTTEKA ATYHVDRSGN VHHQFQKLLT EFNKSTDAYE
LKIANKLFGE KTYQFLQEYL DAIKKFYQTS VESTDFANAP EESRKKINSW
VESQTNEKIK NLFPDGTIGN DTTLVLVNAI YFKGQWENKF KKENTKEEFK
WPNKNTYKSV QMMRQYNSFN FALLEDVQAK VLEIPYKGD LSMIVLLPNE
IDGLQKLEEK LTAEKLMWT SLQNMRETCV DLHLPRFKME ESYDLKDTLR
TMGMVNIFNG DADLSGMTWS HGLSVSKVLH KAFVEVTEEG VEAAAATAVV
VVELSSPSTN EELCCNHPFL FFIRQNKTNS ILFYGRFSPP

[IDENTIFICATION]

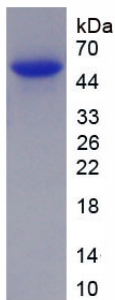


Figure. SDS-PAGE

[IMPORTANT NOTE]

The kit is designed for research use only, we will not be responsible for any issue if the kit was used in clinical diagnostic or any other procedures.