

RPA121Ca01 100µg

Recombinant Stem Cell Factor Receptor (SCFR)

Organism Species: *Canis familiaris*; Canine (Dog)

Instruction manual

FOR RESEARCH USE ONLY

NOT FOR USE IN CLINICAL DIAGNOSTIC PROCEDURES

12th Edition (Revised in Aug, 2016)

[PROPERTIES]

Source: Prokaryotic expression

Host: *E.coli*

Residues: Gln28~Pro527

Tags: N-terminal His Tag

Subcellular Location: Membrane

Purity: > 80%

Traits: Freeze-dried powder

Buffer formulation: 20mM Tris, 150mM NaCl, pH8.0, containing 0.01% SKL, 5% Trehalose.

Original Concentration: 200µg/mL

Applications: Positive Control; Immunogen; SDS-PAGE; WB.

(May be suitable for use in other assays to be determined by the end user.)

Predicted isoelectric point: 6.3

Predicted Molecular Mass: 59.7kDa

Accurate Molecular Mass: 57kDa as determined by SDS-PAGE reducing conditions.

[USAGE]

Reconstitute in 20mM Tris, 150mM NaCl (pH8.0) to a concentration of 0.1-1.0 mg/mL. Do not vortex.

[STORAGE AND STABILITY]

Storage: Avoid repeated freeze/thaw cycles.

Store at 2-8°C for one month.

Aliquot and store at -80°C for 12 months.

Stability Test: The thermal stability is described by the loss rate. The loss rate was determined by accelerated thermal degradation test, that is, incubate the protein at 37°C for 48h, and no obvious degradation and precipitation were observed. The loss rate is less than 5% within the expiration date under appropriate storage condition.

[SEQUENCE]

QPS VSPGEPSSLPS IHPAKSELIV
 SVGDELRLSC TDPGFVKWTF ETLGQLNENT HNEWITEKAE AGHTGNYTCT
 NRDGLSRSIY VFVRDPAKLF LVDLPLYGKE GNDTLVRCPL TDPEVTNYSL
 RGCEGKPLPK DLTFVADPKA GITIRNVKRE YHRLCLHCSA DQKGRTVLSK
 KFTLKVRAAI RAVPVVSVSK TSSLLKEGEA FSVMCFIKDV SSFVDSMWIK
 ENSQQTNAQT QSNSWHHGDF NFERQEKLII SSARVNDSGV FMCYANNTFG
 SANVTTTLEV VDKGFINIFP MMSTTIFVND GENVDLIVEY EAYPKPEHQQ
 WIYMNRTFTD KWEDYPKSDN ESNIRYVSEL HLTRLKGNEL GTYTFQVSNS
 DVNSSVTFNV YVNTKPEILT HESLTNGMLQ CVVAGFPEPA VDWFYFCPGA
 QRCSVPIGPM DVQMQNSSLS PSGKLVVQSS IDYSAFKHNG TVECRAYNNV
 GRSSAFFNFA FKGNSKEQIH PHTLFTP

[IDENTIFICATION]

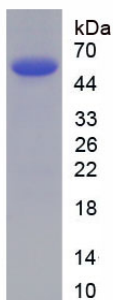


Figure. SDS-PAGE

[IMPORTANT NOTE]

The kit is designed for research use only, we will not be responsible for any issue if the kit was used in clinical diagnostic or any other procedures.