

**RPC239Hu01 10µg**

**Recombinant Thyroid Hormone Receptor Alpha (THRa)**

**Organism Species: *Homo sapiens (Human)***

***Instruction manual***

**FOR RESEARCH USE ONLY**

**NOT FOR USE IN CLINICAL DIAGNOSTIC PROCEDURES**

---

13th Edition (Revised in Aug, 2023)

## **[ PROPERTIES ]**

**Source:** Prokaryotic expression

**Host:** *E.coli*

**Residues:** Met1~Pro490

**Tags:** N-terminal His Tag

**Subcellular Location:** Nucleus

**Purity:** > 97%

**Traits:** Freeze-dried powder

**Buffer formulation:** 20mM Tris, 150mM NaCl, pH8.0, containing 1mM EDTA, 1mM DTT, 0.01% Sarcosyl, 5% Trehalose .

**Original Concentration:** 200µg/mL

**Applications:** Positive Control; Immunogen; SDS-PAGE; WB.

(May be suitable for use in other assays to be determined by the end user.)

**Predicted isoelectric point:** 6.4

**Predicted Molecular Mass:** 58.5kDa

**Accurate Molecular Mass:** 59kDa as determined by SDS-PAGE reducing conditions.

## **[ USAGE ]**

Reconstitute in 20mM Tris, 150mM NaCl (pH8.0) to a concentration of 0.1-1.0 mg/mL. Do not vortex.

## **[ STORAGE AND STABILITY ]**

**Storage:** Avoid repeated freeze/thaw cycles.

Store at 2-8°C for one month.

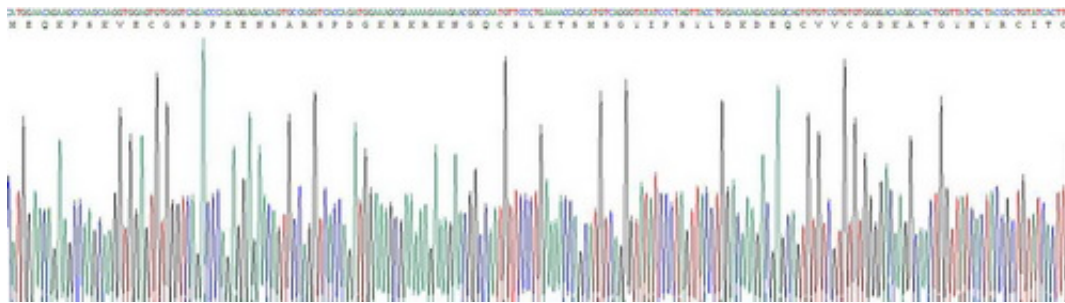
Aliquot and store at -80°C for 12 months.

**Stability Test:** The thermal stability is described by the loss rate. The loss rate was determined by accelerated thermal degradation test, that is, incubate the protein at 37°C for 48h, and no obvious degradation and precipitation were observed. The loss rate is less than 5% within the expiration date under appropriate storage condition.

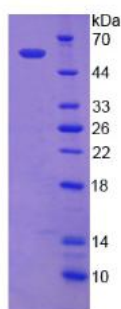
## [ SEQUENCE ]

```
MEQKPSKVEC  GSDPEENSAR  SPDGKRKRKN  QCSSLKTSMS  GYIPSYLDKD
EQCVVCGDKA  TGYHYRCITC  EGCKGFFRRT  IQKNLHPTYS  CKYDSCCVID
KITRNQCQLC  RFKKCIAVGM  AMDLVLDDSK  RYAKRKLIEQ  NRERRRKEEM
IRSLQQRPEP  TPEEWDLIHI  ATEAHRSTNA  QGSHWKQRRK  FLPDDIGQSP
IVSMPDGDKV  DLEAFSEFTK  IITPAITRVV  DFAKKLPMFS  ELPCEQIIL
LKGCCMEIMS  LRAAVRYDPE  SDTLTSLGEM  AVKREQLKNG  GLGVVSDAIF
ELGKSLSAFN  LDDTEVALLQ  AVLLMSTDRS  GLLCVDKIEK  SQEAYLLAFE
HYVNHKHNH  PHFWPKLLMK  EREVQSSILY  KGAAAEGRPG  GSLGVHPEGQ
QLLGMHVVG  PQVRQLEQL  GEAGSLQGPV  LQHSPKSPQ  QRLLELLHRS
GILHARAVCG  EDDSSEADSP  SSSEEEPEVC  EDLAGNAASP
```

## [ IDENTIFICATION ]



**Figure . Gene Sequencing (extract)**



**Figure. SDS-PAGE**

## [ IMPORTANT NOTE ]

The kit is designed for research use only, we will not be responsible for any issue if the kit was used in clinical diagnostic or any other procedures.