

**RPA557Hu01 1mg**

**Recombinant Thyroid Peroxidase (TPO)**

**Organism Species: *Homo sapiens* (Human)**

***Instruction manual***

FOR RESEARCH USE ONLY

NOT FOR USE IN CLINICAL DIAGNOSTIC PROCEDURES

---

12th Edition (Revised in Aug, 2016)

**[ PROPERTIES ]**

**Source:** Prokaryotic expression

**Host:** *E.coli*

**Residues:** Phe19~Arg846

**Tags:** N-terminal His Tag

**Subcellular Location:** Membrane

**Purity:** > 90%

**Traits:** Freeze-dried powder

**Buffer formulation:** PBS, pH7.4, containing 0.01% SKL, 5% Trehalose.

**Original Concentration:** 300µg/mL

**Applications:** Positive Control; Immunogen; SDS-PAGE; WB.

(May be suitable for use in other assays to be determined by the end user.)

**Predicted isoelectric point:** 6.5

**Predicted Molecular Mass:** 95.7kDa

**Accurate Molecular Mass:** 96kDa as determined by SDS-PAGE reducing conditions.

**[ USAGE ]**

Reconstitute in 10mM PBS (pH7.4) to a concentration of 0.1-1.0 mg/mL. Do not vortex.

**[ STORAGE AND STABILITY ]**

**Storage:** Avoid repeated freeze/thaw cycles.

Store at 2-8°C for one month.

Aliquot and store at -80°C for 12 months.

**Stability Test:** The thermal stability is described by the loss rate. The loss rate was determined by accelerated thermal degradation test, that is, incubate the protein at 37°C for 48h, and no obvious degradation and precipitation were observed. The loss rate is less than 5% within the expiration date under appropriate storage condition.

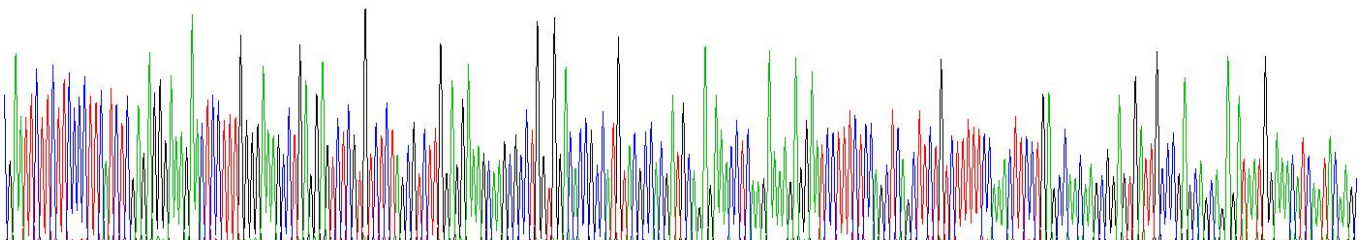
**[ SEQUENCE ]**

```

          FF PFISRGKELL WGKPEESRVS SVLEESKRLV
DTAMYATMQR NLKKRGILSP AQLLSFSKLP EPTSGVIARA AEIMETSIQA
MKRKVNLTQ  QSQHPTDALS EDLLSIANM SGCLPYMLPP KCPNTCLANK
YRPITGACNN RDHPRWGASN TALARWLPPV YEDGFSQPRG WNPGLYNGF
PLPPVREVTR HVIQVSNEVV TDDDRYSDLL MAWGQYIDHD IAFTPQSTSK
AAFGGGADCQ MTCENQNPCF PIQLPEEARP AAGTACLPHY RSSAACGTGD
QGALFGNLST ANPRQQMNGL TSFLDASTVY GSSPALERQL RNWTSAEGLL
RVHARLRDSG RAYLPFVPPR APAACAPEPG IPGETRGPCF LAGDGRASEV
PSLTALHTLW LREHNRLAAA LKALNAHWSA DAVYQEARKV VGALHQIITL
RDYIPRILGP EAFQQYVGPY EGYDSTANPT VSNVFSTAAF RFGHATIHPL
VRRLDASFQE HPDLPGLWLH QAFFSPWTLT RGGGLDPLIR GLLARPAKLQ
VQDQLMNEEL TERLFVLSNS STLDLASINL QRGRDHGLPG YNEWREFCGL
PRLETPADLS TAIASRSVAD KILDLYKHPD NIDVWLGLA ENFLPRARTG
PLFACLIGKQ MKALRDGDFW WWENSHVFTD AQRRELEKHS LSRVICDNTG
LTRVPMDAFQ VGKFPEDFES CDSITGMNLE AWRETFPQDD KCGFPESVEN
GDFVHCEESG RRVLVYSCRH GYELQGREQL TCTQEGWDFQ PPLCKDVNEC
ADGAHPPCHA SARCRNTKGG FQCLCADPYE LGDDGRTCVD SGRLPR
    
```

**[ IDENTIFICATION ]**

QWATTCITCTGCTCTGCTGCGGGAGWCTCTTTGGGWAICTGCGGRTCTGTGCTCAGGCTCTGGGGAGCGCCCTGGTGCCGCCCAATGCTCCCGAGATCGAGWACTGMAWAGGCGMCTCTTCTCGAGCTCGCTCTCTGCTTTTGGAACTCTCTGCGCAGCAGGGGGGAGTATGCGCGCCGCGGAGTGGWAGTGGATCGAG



**Figure . Gene Sequencing (extract)**

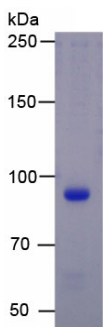


Figure. SDS-PAGE

**[ IMPORTANT NOTE ]**

The kit is designed for research use only, we will not be responsible for any issue if the kit was used in clinical diagnostic or any other procedures.