

RPD213Ca01 10µg
Recombinant Thyroid Stimulating Hormone Beta (TSHb)
Organism Species: *Canis familiaris*; Canine (Dog)
Instruction manual

FOR RESEARCH USE ONLY
NOT FOR USE IN CLINICAL DIAGNOSTIC PROCEDURES

12th Edition (Revised in Aug, 2016)

[PROPERTIES]

Source: Prokaryotic expression

Host: *E.coli*

Residues: Ser20~Ile138

Tags: N-terminal His and GST Tag

Subcellular Location: Secreted

Purity: > 97%

Traits: Freeze-dried powder

Buffer formulation: 20mM Tris, 150mM NaCl, pH8.0, containing 0.01% SKL, 5% Trehalose.

Original Concentration: 200µg/mL

Applications: Positive Control; Immunogen; SDS-PAGE; WB.

(May be suitable for use in other assays to be determined by the end user.)

Predicted isoelectric point: 8.2

Predicted Molecular Mass: 43.7kDa

Accurate Molecular Mass: 44kDa as determined by SDS-PAGE reducing conditions.

[USAGE]

Reconstitute in 20mM Tris, 150mM NaCl (pH8.0) to a concentration of 0.1-1.0 mg/mL. Do not vortex.

[STORAGE AND STABILITY]

Storage: Avoid repeated freeze/thaw cycles.

Store at 2-8°C for one month.

Aliquot and store at -80°C for 12 months.

Stability Test: The thermal stability is described by the loss rate. The loss rate was determined by accelerated thermal degradation test, that is, incubate the protein at 37°C for 48h, and no obvious degradation and precipitation were observed. The loss rate is less than 5% within the expiration date under appropriate storage condition.

[SEQUENCE]

S FCFPTEYTMH VERKECAYCL TINTTICAGY
 CMTRDINGKL FLPKYALSQD VCTYRDFMYK TVEIPGCPRH VTPYFSYPVA
 VSCKCGKCNT DYSDCIHEAI KTNVCTKPQK SYVVGFSI

[IDENTIFICATION]

TCTTTTGTGTTCTACTGAGTATACGATGCGTGGAAAGGAGAGGTGCTTACTGCTTACCAICACACCCACCATCTGTGCTGGATATGTATGACACGGGATACAAATGGCAACTATTCTTCCAAATATGCTCTGTCCAGGATGTTTGTACATATAGAGACTTTATGACACAGCTGTGAAATACAGGATGCCCGCCCACTTACTCCCTATTCTCTCA
 S F C F P T E Y T M H V E R K E C A Y C L T I N T T I C A G Y C M T R D I N G K L F L P K Y A L S Q D V C T Y R D F M Y K T V E I P G C P R H V T F Y F S Y

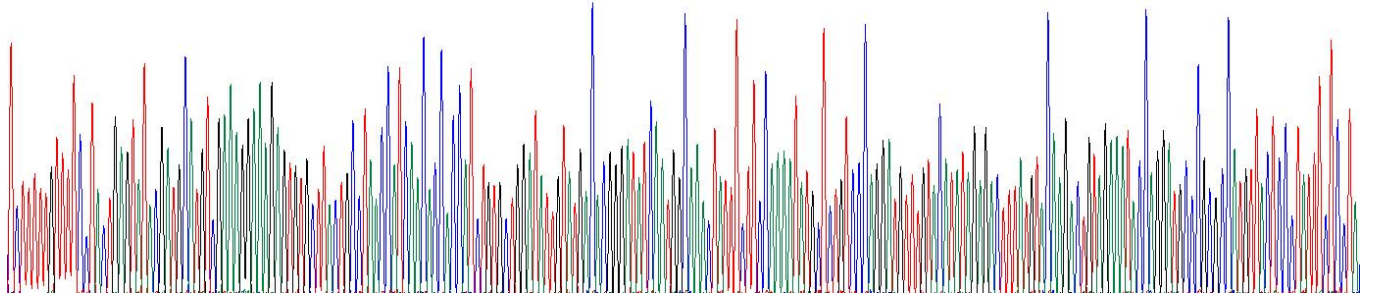
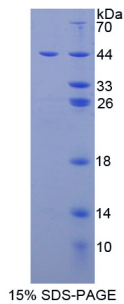


Figure. Gene Sequencing (Extract)



[IMPORTANT NOTE]

The kit is designed for research use only, we will not be responsible for any issue if the kit was used in clinical diagnostic or any other procedures.