

**RPB990Hu03 50µg**

**Recombinant Toll Like Receptor 5 (TLR5)**

**Organism Species: *Homo sapiens (Human)***

***Instruction manual***

FOR RESEARCH USE ONLY

NOT FOR USE IN CLINICAL DIAGNOSTIC PROCEDURES

---

12th Edition (Revised in Aug, 2016)

## [ **PROPERTIES** ]

**Source:** Prokaryotic expression

**Host:** *E.coli*

**Residues:** Leu303~Leu514

**Tags:** N-terminal His Tag

**Subcellular Location:** Membrane

**Purity:** > 90%

**Traits:** Freeze-dried powder

**Buffer formulation:** 100mMNaHCO<sub>3</sub>, 500mMNaCl, pH8.3, containing 0.01% SKL, 5% Trehalose.

**Original Concentration:** 200µg/mL

**Applications:** Positive Control; Immunogen; SDS-PAGE; WB.

(May be suitable for use in other assays to be determined by the end user.)

**Predicted isoelectric point:** 5.4

**Predicted Molecular Mass:** 31.2kDa

**Accurate Molecular Mass:** 29kDa as determined by SDS-PAGE reducing conditions.

## [ **USAGE** ]

Reconstitute in 100mM NaHCO<sub>3</sub>, 500mM NaCl (pH8.3) to a concentration of 0.1-1.0 mg/mL. Do not vortex.

## [ **STORAGE AND STABILITY** ]

**Storage:** Avoid repeated freeze/thaw cycles.

Store at 2-8°C for one month.

Aliquot and store at -80°C for 12 months.

**Stability Test:** The thermal stability is described by the loss rate. The loss rate was determined by accelerated thermal degradation test, that is, incubate the protein at 37°C for 48h, and no obvious degradation and precipitation were observed. The loss rate is less than 5% within the expiration date under appropriate storage condition.

**[ SEQUENCE ]**

```
LNSRVFET LKDLKVLNLA YNKINKIADE AFYGLDNLQV LNLSYNLLGE
LYSSNFYGLP KVAYIDLQKN HIAIIQDQTF KFLEKLQTLD LRDNALTTIH
FIPSIPDIFL SGNKLVTLPK INLTANLIHL SENRLENLDI LYFLLRVPHL
QILILNQNRFS SCSGDQTPS ENPSLEQLFL GENMLQLAWE TELCWDVFEG
LSHLQVLYLN HNYL
```

**[ IDENTIFICATION ]**

CTGAACTCAGGCTCTTTGAGACCTCAAGGATTTGAGGTTCTGAACTTGCCTACACAGGTAATAGATTGCAGATGAGGCTTTTACGGACTTGACCACTCCAGTCTCAATTTGTCATATACTTCTGGGGGACTTTACAGTTCGATTTCTATGGACTACCTAAGGTGGCTACATTTGATTTGAAAAGGATCACATTCGAAATTTCA  
L N S R V F E T L K D L K V L N L A Y N K I N K I A D E A F Y G L D N L Q V L N L S Y N L L G E L Y S S N F Y G L P K V A Y I D L Q K N H I A I I Q

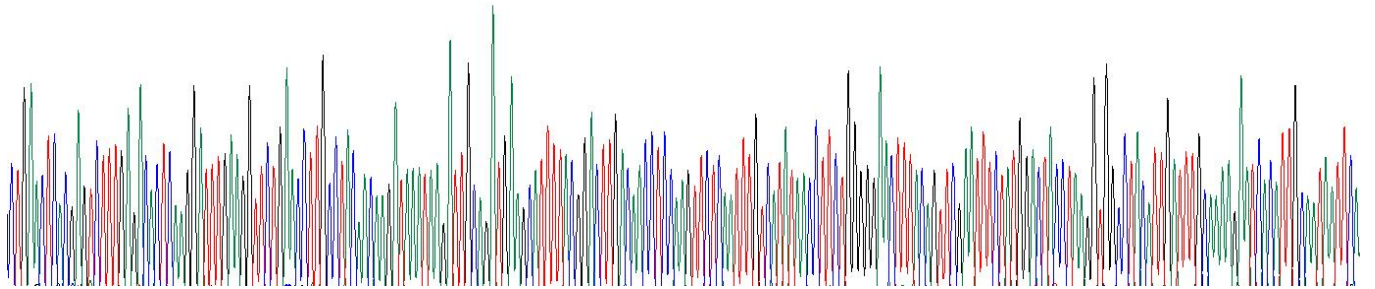


Figure. Gene Sequencing (Extract)

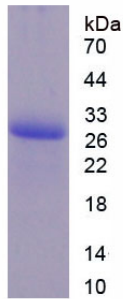


Figure. SDS-PAGE

**[ IMPORTANT NOTE ]**

The kit is designed for research use only, we will not be responsible for any issue if the kit was used in clinical diagnostic or any other procedures.