

**RPA709Mu01 10µg**

**Recombinant Toll Like Receptor 9 (TLR9)**

**Organism Species: *Mus musculus* (Mouse)**

***Instruction manual***

**FOR RESEARCH USE ONLY**

**NOT FOR USE IN CLINICAL DIAGNOSTIC PROCEDURES**

---

13th Edition (Revised in Aug, 2023)

## **[ PROPERTIES ]**

**Source:** Prokaryotic expression

**Host:** *E.coli*

**Residues:** Leu26~Asn332

**Tags:** N-terminal His and GST Tag

**Subcellular Location:** Membrane

**Purity:** > 80%

**Traits:** Freeze-dried powder

**Buffer formulation:** 100mMNaHCO<sub>3</sub>, 500mMNaCl, pH8.3, containing 0.01% Sarcosyl, 5% Trehalose.

**Original Concentration:** 150µg/mL

**Applications:** Positive Control; Immunogen; SDS-PAGE; WB.

(May be suitable for use in other assays to be determined by the end user.)

**Predicted isoelectric point:** 8.1

**Predicted Molecular Mass:** 64.1kDa

**Accurate Molecular Mass:** 64kDa as determined by SDS-PAGE reducing conditions.

## **[ USAGE ]**

Reconstitute in ddH<sub>2</sub>O to a concentration of 0.1-0.5 mg/mL. Do not vortex.

## **[ STORAGE AND STABILITY ]**

**Storage:** Avoid repeated freeze/thaw cycles.

Store at 2-8°C for one month.

Aliquot and store at -80°C for 12 months.

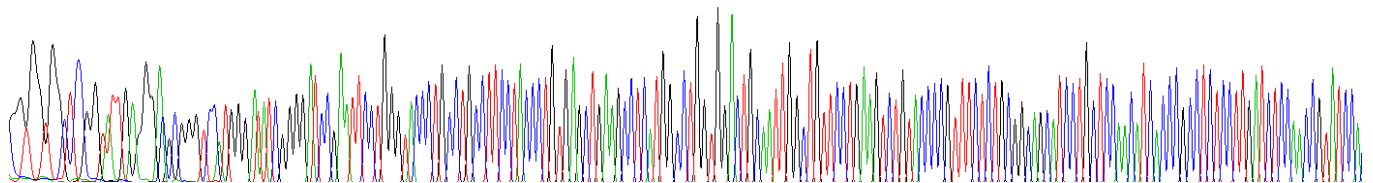
**Stability Test:** The thermal stability is described by the loss rate. The loss rate was determined by accelerated thermal degradation test, that is, incubate the protein at 37°C for 48h, and no obvious degradation and precipitation were observed. The loss rate is less than 5% within the expiration date under appropriate storage condition.

## **[ SEQUENCE ]**

LGTLP AFLPCELKPH GLVDCNWFL  
 KSVPRFSAAA SCSNITRLSL ISNRIHHLHN SDFVHLSNLR QLNLKWNCPP  
 TGLSPLHFSC HMTIEPRTFL AMRTLEELNL SYNGITTVPRLPSSLVNLSL  
 SHTNILVLDA NSLAGLYSLR VLFMDGNCY KNPCTGAVKV TPGALLGLSN  
 LTHLSLKYNN LTKVPRQLPP SLEYLLVSYN LIVKLGPEL ANLTSRLVLD  
 VGGNCRRCDH APNPCIECGQ KSLHLHPETF HHLSHLEGLV LKDSSLHTLN  
 SSWFQGLVNL SVLDLSENFL YESITHTNAF QN

## [ IDENTIFICATION ]

GGTGTGCTCGGTATGAGGA GGGGTCTATGGATATCGGGATCCGAATCTGGGTACCTGCTGCTTCTTACCTGTGAGCTGAGGCTCATGCGCTGGTGGCTGCAATTGGCTGTCTGAGTCTGTATCCCGTTTCTCTGCGGAGCATCTGCTCAAGATCAACCGCTCTCTCTGATCTCAACCGTATCCG



**Figure . Gene Sequencing (extract)**



**Figure. SDS-PAGE**

## [ IMPORTANT NOTE ]

The kit is designed for research use only, we will not be responsible for any issue if the kit was used in clinical diagnostic or any other procedures.