

**RPA124Ga01 50µg**

**Recombinant Transforming Growth Factor Beta 1 (TGFb1)**

**Organism Species: *Chicken (Gallus)***

***Instruction manual***

FOR RESEARCH USE ONLY

NOT FOR USE IN CLINICAL DIAGNOSTIC PROCEDURES

---

12th Edition (Revised in Aug, 2016)

## **[ PROPERTIES ]**

**Source:** Prokaryotic expression

**Host:** *E.coli*

**Residues:** Asp260~Ser373

**Tags:** N-terminal His Tag

**Subcellular Location:** Secreted

**Purity:** > 90%

**Traits:** Freeze-dried powder

**Buffer formulation:** 20mM Tris, 150mM NaCl, pH8.0, containing 0.01% SKL, 5% Trehalose.

**Original Concentration:** 200µg/mL

**Applications:** Positive Control; Immunogen; SDS-PAGE; WB.

(May be suitable for use in other assays to be determined by the end user.)

**Predicted isoelectric point:** 7.1

**Predicted Molecular Mass:** 16.7kDa

**Accurate Molecular Mass:** 18kDa as determined by SDS-PAGE reducing conditions.

## **[ USAGE ]**

Reconstitute in 20mM Tris, 150mM NaCl (pH8.0) to a concentration of 0.1-1.0 mg/mL. Do not vortex.

## **[ STORAGE AND STABILITY ]**

**Storage:** Avoid repeated freeze/thaw cycles.

Store at 2-8°C for one month.

Aliquot and store at -80°C for 12 months.

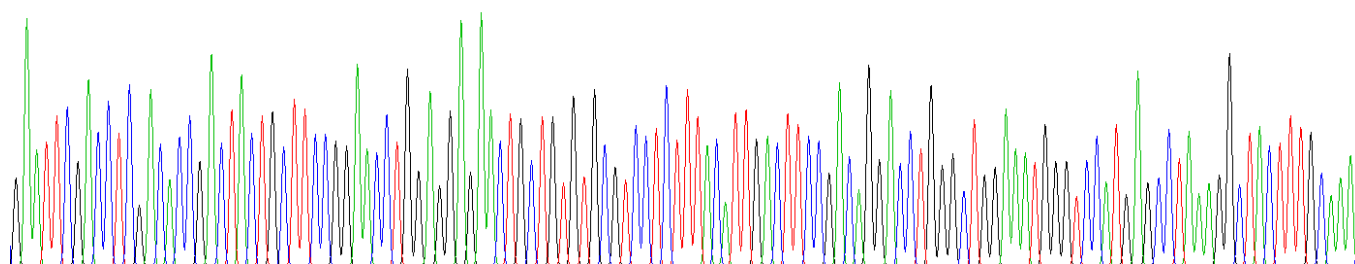
**Stability Test:** The thermal stability is described by the loss rate. The loss rate was determined by accelerated thermal degradation test, that is, incubate the protein at 37°C for 48h, and no obvious degradation and precipitation were observed. The loss rate is less than 5% within the expiration date under appropriate storage condition.

## **[ SEQUENCE ]**

D L D T D Y C F G P G  
 T D E K N C C V R P L Y I D F R K D L Q W K W I H E P K G Y  
 M A N F C M G P C P Y I W S A D T Q Y T K V L A L Y N Q H N  
 P G A S A A P C C V P Q T L D P L P I I Y Y V G R N V R V E  
 Q L S N M V V R A C K C S

## [ IDENTIFICATION ]

G A A T T C G A C C T C G A C A C C G A C T A C T G C T T C C G G A A C C T G G A G G A A C T G C T G T G C G T C C T C T T A C A T T G A C T T C C G A C G A C C T G G G C T G G A A A T G G T C C A T G A G C T A A A G G C T A C T T T G C A A A C



**Figure . Gene Sequencing (extract)**

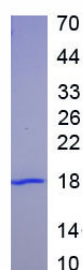


Figure. SDS-PAGE

## [ IMPORTANT NOTE ]

The kit is designed for research use only, we will not be responsible for any issue if the kit was used in clinical diagnostic or any other procedures.