

RPA547Ca01 100µg
Recombinant Vascular Cell Adhesion Molecule 1 (VCAM1)
Organism Species: Canis familiaris; Canine (Dog)
Instruction manual

FOR IN VITRO USE AND RESEARCH USE ONLY
NOT FOR USE IN CLINICAL DIAGNOSTIC PROCEDURES

12th Edition (Revised in Aug, 2016)

[**PROPERTIES**]

Source: Prokaryotic expression.

Host: *E. coli*

Residues: Thr136~Pro372

Tags: N-terminal His-Tag

Subcellular Location: Membrane.

Purity: >98%

Traits: Freeze-dried powder

Buffer formulation: 20mM Tris, 150mM NaCl, pH8.0, containing 1mM EDTA, 1mM DTT, 0.01% sarcosyl, 5%Trehalose and Proclin300.

Original Concentration: 200µg/mL

Applications: Positive Control; Immunogen; SDS-PAGE; WB.

(May be suitable for use in other assays to be determined by the end user.)

Predicted isoelectric point: 5.1

Predicted Molecular Mass: 29.7kDa

Accurate Molecular Mass: 30kDa as determined by SDS-PAGE reducing conditions.

[**USAGE**]

Reconstitute in 20mM Tris, 150mM NaCl (pH8.0) to a concentration of 0.1-1.0 mg/mL. Do not vortex.

[**STORAGE AND STABILITY**]

Storage: Avoid repeated freeze/thaw cycles.

Store at 2-8°C for one month.

Aliquot and store at -80°C for 12 months.

Stability Test: The thermal stability is described by the loss rate. The loss rate was determined by accelerated thermal degradation test, that is, incubate the protein at 37°C for 48h, and no obvious degradation and precipitation were observed. The loss rate is less than 5% within the expiration date under appropriate storage condition.

[SEQUENCE]

```
                                TCLVR DVYPFDRLEM
NLLNGNDLLQ SKDFLEPMEK KSLETKSLEV TFTPTNEDIG KGLVCRAQLH
MDEIDFEPKE RETTKELQVY ISPRNTFISV TPSMRLQEGG SVTMTCASEG
LPPPQIFWSK KLDNGNLQLL SGNATLTLIA MRLEDSTGYV CEGVNEVGKD
GKEVELIVQE KPFTVEISPG PQIIAQIGDS VVLTCGVTDG ESPSFSWRTQ
IDSPLSGTVK VEGAKSTLTL SP
```

[IDENTIFICATION]

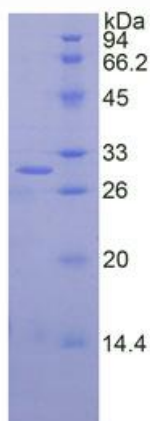


Figure 1. SDS-PAGE