

RPL820Hu01 10µg

Recombinant Wingless Type MMTV Integration Site Family, Member 2 (WNT2)

Organism Species: Homo sapiens (Human)

Instruction manual

FOR IN VITRO USE AND RESEARCH USE ONLY

NOT FOR USE IN CLINICAL DIAGNOSTIC PROCEDURES

11th Edition (Revised in May, 2016)

[PROPERTIES]

Source: Prokaryotic expression.

Host: *E. coli*

Residues: Ser26~Thr360

Tags: N-terminal His-Tag

Tissue Specificity: Brain, Lung, Heart, Placenta.

Purity: >95%

Traits: Freeze-dried powder

Buffer formulation: 20mM Tris, 150mM NaCl, pH8.0, containing 1mM EDTA, 1mM DTT, 0.01% sarcosyl, 5%Trehalose and Proclin300.

Original Concentration: 200ug/mL

Applications: SDS-PAGE; WB; ELISA; IP; CoIP; Purification; Amine Reactive Labeling.

(May be suitable for use in other assays to be determined by the end user.)

Predicted isoelectric point: 9.2

Predicted Molecular Mass: 41.3kDa

Accurate Molecular Mass: 41kDa as determined by SDS-PAGE reducing conditions.

[USAGE]

Reconstitute in 20mM Tris, 150mM NaCl (pH8.0) to a concentration of 0.1-1.0 mg/mL. Do not vortex.

[STORAGE AND STABILITY]

Storage: Avoid repeated freeze/thaw cycles.

Store at 2-8°C for one month.

Aliquot and store at -80°C for 12 months.

Stability Test: The thermal stability is described by the loss rate. The loss rate was determined by accelerated thermal degradation test, that is, incubate the protein at 37°C for 48h, and no obvious degradation and precipitation were observed. The loss rate is less than 5% within the expiration date under appropriate storage condition.

[SEQUENCE]

		SWWYM	RATGGSSRVM	CDNVPGLVSS
QRQLCHRHPD	VMRAISQGVA	EWTAECQHQF	RQHRWNCNTL	DRDHSLFGRV
LLRSSRESAF	VYAISSAGVV	FAITRACSQG	EVKSCSCDPK	KMGSAKDSKG
IFDWGGCSDN	IDYGIKFARA	FVDAKERK GK	DARALMNLHN	NRAGRKAVKR
FLKQECKCHG	VSGSCTLRTC	WLAMADFRKT	GDYLWRKYNG	AIQVVMNQDG
TGFTVANERF	KKPTKNDLVY	FENSPDYCIR	DREAGSLGTA	GRVCNLTSRG
MDSCEVMCCG	RGYDTSHVTR	MTKCGCKFWH	CCAVRCQDCL	EALDVHTCKA
PKNADWTTAT				

[IDENTIFICATION]

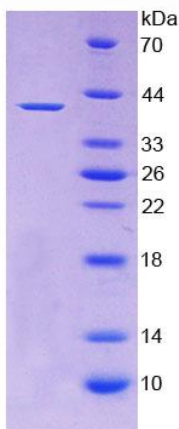


Figure 1. SDS-PAGE