

**RPP122Hu01 50µg**

**Recombinant Wingless Type MMTV Integration Site Family, Member 5B (WNT5B)**

**Organism Species: *Homo sapiens* (Human)**

***Instruction manual***

FOR RESEARCH USE ONLY

NOT FOR USE IN CLINICAL DIAGNOSTIC PROCEDURES

---

13th Edition (Revised in Aug, 2023)

## **[ PROPERTIES ]**

**Source:** Prokaryotic expression

**Host:** *E.coli*

**Residues:** Gln18~Lys359

**Tags:** N-terminal His and GST Tag

**Subcellular Location:** Secreted, Extracellular matrix

**Purity:** > 90%

**Traits:** Freeze-dried powder

**Buffer formulation:** 100mMNaHCO<sub>3</sub>, 500mMNaCl, pH8.3, containing 0.01% Sarcosyl, 5% Trehalose.

**Original Concentration:** 120µg/mL

**Applications:** Positive Control; Immunogen; SDS-PAGE; WB.

(May be suitable for use in other assays to be determined by the end user.)

**Predicted isoelectric point:** 8.8

**Predicted Molecular Mass:** 68.5kDa

**Accurate Molecular Mass:** 69kDa as determined by SDS-PAGE reducing conditions.

## **[ USAGE ]**

Reconstitute in ddH<sub>2</sub>O to a concentration of 0.1-0.5 mg/mL. Do not vortex.

## **[ STORAGE AND STABILITY ]**

**Storage:** Avoid repeated freeze/thaw cycles.

Store at 2-8°C for one month.

Aliquot and store at -80°C for 12 months.

**Stability Test:** The thermal stability is described by the loss rate. The loss rate was determined by accelerated thermal degradation test, that is, incubate the protein at 37°C for 48h, and no obvious degradation and precipitation were observed. The loss rate is less than 5% within the expiration date under appropriate storage condition.

## **[ SEQUENCE ]**

QLL TDANSWWSLA LNPVQRPEMF IIGAQPVCSSQ  
 LPGLSPGQRK LCQLYQEHMA YIGEGAKTGI KECQHQRQR RWNCSTADNA  
 SVFGRVMQIG SRETAFTHAV SAAGVVNAIS RACREGELST CGCSRTARPK  
 DLPRDWLWGG CGDNVEYGYR FAKEFVDARE REKNFAKGSE EQGRVLMNLQ  
 NNEAGRRAVY KMADVACKCH GVSGSCSLKT CWLQLAEFRK VGDRLKEKYD  
 SAAAMRVTRK GRLELVNSRF TQPTPEDLVY VDPSPDYCLR NESTGSLGTQ  
 GRLCNKTSEG MDGCELMCCG RGYNQFKSVQ VERCHCKFHW CCFVRCKKCT  
 EIVDQYICK

## [ IDENTIFICATION ]

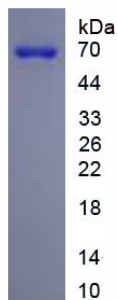


Figure. SDS-PAGE

## [ IMPORTANT NOTE ]

The kit is designed for research use only, we will not be responsible for any issue if the kit was used in clinical diagnostic or any other procedures.