

RPA120Mu01 10µg

Recombinant Stem Cell Factor (SCF)

Organism Species: Mus musculus (Mouse)

Instruction manual

FOR IN VITRO USE AND RESEARCH USE ONLY

NOT FOR USE IN CLINICAL DIAGNOSTIC PROCEDURES

9th Edition (Revised in Jul, 2013)

[PROPERTIES]

Residues: Lys24~Ala247 (Accession # P20826),
with N-terminal His-Tag.

Host: *E. coli*

Subcellular Location: Cell membrane; Single-pass
type I membrane protein.

Purity: >95%

Endotoxin Level: <1.0EU per 1µg
(determined by the LAL method).

Formulation: Supplied as lyophilized form in 20mM Tris,
150mM NaCl, pH8.0, containing 1mM EDTA, 1mM DTT,
0.01% sarcosyl, 5% trehalose, and preservative.

Predicted isoelectric point: 7.1

Predicted Molecular Mass: 26.0kDa

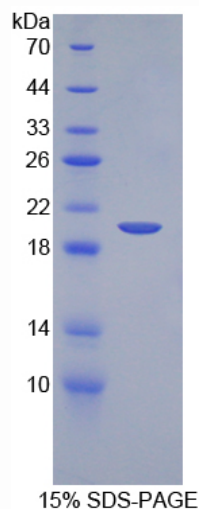
Accurate Molecular Mass: 20kDa as determined by SDS-PAGE reducing conditions.

Applications: SDS-PAGE; WB; ELISA; IP.

(May be suitable for use in other assays to be determined by the end user.)

Note: The possible reasons that the actual band size differs from the predicted are as follows:

1. Splice variants: Alternative splicing may create different sized proteins from the same gene.
2. Relative charge: The composition of amino acids may affects the charge of the protein.
3. Post-translational modification: Phosphorylation, glycosylation, methylation etc.



4. Post-translation cleavage: Many proteins are synthesized as pro-proteins, and then cleaved to give the active form.
5. Polymerization of the target protein: Dimerization, multimerization etc.

[USAGE]

Reconstitute in ddH₂O.

[STORAGE AND STABILITY]

Storage: Avoid repeated freeze/thaw cycles.

Store at 2-8°C for one month.

Aliquot and store at -80°C for 12 months.

Stability Test: The thermal stability is described by the loss rate of the target protein. The loss rate was determined by accelerated thermal degradation test, that is, incubate the protein at 37°C for 48h, and no obvious degradation and precipitation were observed. (Referring from China Biological Products Standard, which was calculated by the Arrhenius equation.) The loss of this protein is less than 5% within the expiration date under appropriate storage condition.

[SEQUENCES]

The target protein is fused with N-terminal His-Tag, its sequence is listed below.
MGHHHHHSG S-KTKEICG NPVTDNVKDI TKLVANLPND YMITLNYVAG MDVLPSHCWL
RDMVIQLSLS LTTLLDKFSN ISEGLSNYSI IDKLGKIVDD LVLMEENAP KNIKESPKRP
ETRSFTPEEF FSIFNRSIDA FKDFMVASDT SDCVLSSTLG PEKDSRVSVT KPFMLPPVAA
SSLRNDSSSS NRKAAKAPED SGLQWTAMAL PALISLVIGF AFGALYWKKK QSSLTRA

[REFERENCES]

1. Anderson D.M., *et al.* (1990) Cell 63:235-243.
2. Huang E.J., *et al.* (1992) Mol. Biol. Cell 3:349-362.
3. Flanagan J.G., *et al.* (1991) Cell 64:1025-1035.
4. Brannan C.I., *et al.* (1992) Genes Dev. 6:1832-1842.